



ST. BONIFACE SOCIETY W. C. U., BRANCH NO. 9.

The St. Boniface Society is a branch of the Western Catholic Union, established in Quincy, Ill., in the year 1878 by the Very Rev. J. Janssen, V. G., then pastor of St. Boniface Church of that city, and warmly approved of by the Rt. Rev. Bishop Baltes. This Union has gone through various changes, found necessary in course of time, and is now one of the best and safest fraternal Insurance Societies in the land. It provides for life insurance and permits its various branches to have sick benefit for their members.

With the full approval of Father Peters our St. Boniface Society was organized May 1, 1880, with twelve charter members. Its membership increased slowly but steadily and has now reached the number of 205. When in 1905 the Silver Jubilee of the Society was celebrated a souvenir was printed, to which we refer for particulars.

Death has claimed its victims. The deceased members are as follows:

	DIED.
Jos. Volbracht.....	October 1883.
Jos. Elfgen.....	September 1887.
Ad. Doering.....	March 1888.
John Schatz.....	July 1888.
Anton Hufker.....	November 1889.
Henry Timper.....	August 1891.
Henry Schulz.....	January 1895.
Henry Dunschen.....	January 1895.
Jos. Klopfer.....	September 1895.
John Overath.....	September 1896.
Peter Maley.....	February 1897.
Andrew Nolte.....	September 1897.
Louis Berger.....	September 1897.
Charles Eckhard.....	March 1900.

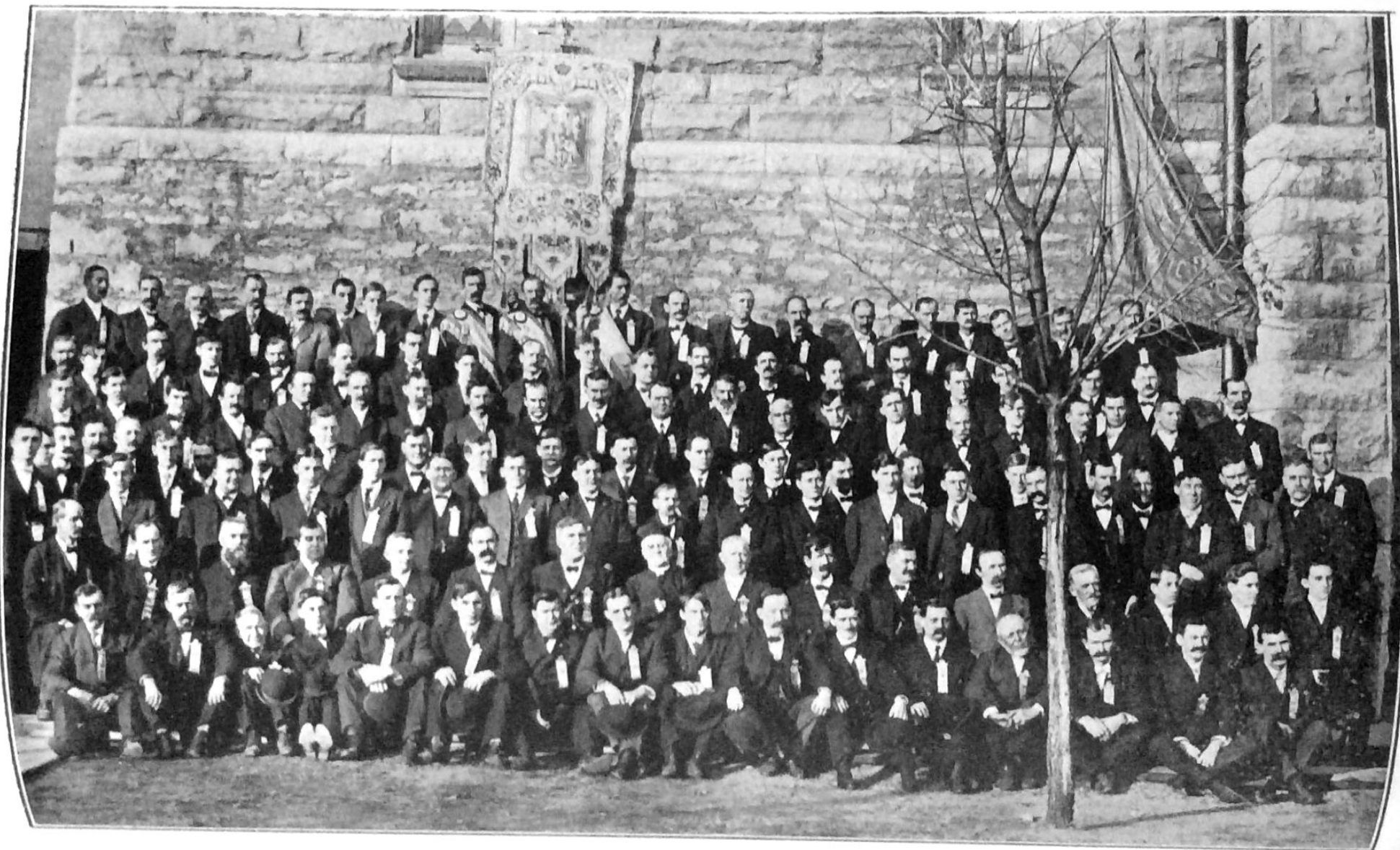
Joseph Miller.....	December 1901.
Thomas Jun.....	March 1902.
John H. Budde.....	June 1902.
George Siegel.....	June 1902.
Frank Hanei.....	February 1903.
Jos. Hefner.....	May 1903.
Louis Walter.....	July 1904.
John Kloss.....	November 1904.
Peter Maul.....	March 1905.
Ernst Wolf.....	July 5, 1905.
Michael Rathgeb.....	April 19, 1906.
Eugene Rathgeb.....	May 18, 1906.
Henry Miller.....	January 4, 1907.
Frank J. Niederkorn.....	April 8, 1907.
Michael Niederkorn.....	August 8, 1907.
Wm. Hentrich.....	October 6, 1907.
John Hentrich.....	December 23, 1907.
Joseph Hufker	
Jos. Merkle.....	June 5, 1908.
Conrad B. Dreisoerner.....	August 22, 1908.
James Sieben.....	October 29, 1908.

Their families received \$63,086.00 insurance.

The amount of sick benefit paid, up to date, is \$4,359.00.

Members in good standing who carry policies to the amounts of \$2,000.00, \$1,000.00, \$500.00 or \$250.00 are as follows:

Acker, Ambrose	Brunner, John
Acker, John	Cappel, Henry
Budde, Aug.	Dannemann, Henry
Budde, Christopher	Degenhardt, A. J.
Budde, Frank	Donner, Jerome
Budde, Frank J.	Dreisoerner, Henry
Budde, John F.	Droste, Theodore
Budde, Joseph	Eckhard, Christopher
Berghoff, Joseph	Ehret, John
Berner, John A.	Ehrhardt, Anton
Boschert, Edward	Eichelmann, Wilh.
Boschert, Martin	Eichhorn, Frank
Braunagel, Emil	Ernst, Emil
Braunagel, Frank	Fahrig, Bernhard
Braunagel, Henry	Fahrig, John
Braunagel, John	Fahrig, Lawrence
Brown, Joseph	Finkes, Martin
Brucker, Jacob	Flachenecker, George



St. Boniface Society, W. C. T. U.

Flori, Jacob
 Flori, Nicolaus
 Flori, Phillip
 Flori, William
 Foerster, Rev. Jos.
 Gissler, John
 Goeken, Albert
 Goeken, Clemens
 Gottlob, Joseph
 Grossheim, George
 Grossheim, John
 Gruse, John Sr.
 Guertler, Peter
 Gundall, Adam
 Haary, Nick
 Hackenthal, Joseph
 Hansen, Frank
 Hauck, August
 Heidrich, Frank C.
 Heidrich, Jos. A.
 Hellrung, Christ.
 Hellrung, Henry A.
 Hellrung, Henry C.
 Hellrung, Lawrence W.
 Hellrung, Peter
 Hirtz, Paul
 Hoettger, Henry
 Huber, Fabian
 Huber, John
 Huebner, Frank J.
 Jehle, John
 Joehl, Meinrad
 Jun, Edward
 Jun, Jacob
 Jun, John
 Jun, John N.
 Jun, Joseph
 Jun, Jos. T.
 Jun, Thomas
 Klasner, John
 Klasner, William
 Klebolt, F. W.
 Klebolt, Frank
 Klebolt, Joseph

Kleinschnittger, Anton
 Klinke, John
 Kolk, James
 Krug, Aloisius
 Krug, Joseph Sr.
 Krug, Joseph Jr.
 Kulp, Henry
 Kunz, John
 Leady, Henry
 Leady, Joseph
 Leady, Louis
 Leuck, Peter
 Maas, Henry
 Maas, Joseph
 Mahler, Frank J.
 Manns, August
 Manns, Frank L.
 Manns, John W.
 Martin, Gebhardt
 Meckel, Rev. Jos.
 Merkle, Frank
 Merkle, Leo J.
 Merkle, John
 Merkle, William
 Metzler, Christ.
 Metzler, Rev. Jos.
 Metzler, Joseph
 Miller, B. J.
 Miller, Chas. H.
 Miller, Frank
 Miller, Jacob
 Miller, J. B.
 Miller, Jos. H.
 Miller, Sebastian
 Misegades, John
 Nestor, Michael
 Niederkorn, Henry
 Niederkorn, J. A.
 Ohley, Edward
 Ostermann, Bernhardt
 Pieper, Frank Jr.
 Pohlmann, John
 Rathgeb, Adolph
 Rathgeb, Anton

Flori, Jacob
 Flori, Nicolaus
 Flori, Phillip
 Flori, William
 Foerster, Rev. Jos.
 Gissler, John
 Goeken, Albert
 Goeken, Clemens
 Gottlob, Joseph
 Grossheim, George
 Grossheim, John
 Gruse, John Sr.
 Guertler, Peter
 Gundall, Adam
 Haary, Nick
 Hackenthal, Joseph
 Hansen, Frank
 Hauck, August
 Heidrich, Frank C.
 Heidrich, Jos. A.
 Hellrung, Christ.
 Hellrung, Henry A.
 Hellrung, Henry C.
 Hellrung, Lawrence W.
 Hellrung, Peter
 Hirtz, Paul
 Hoettger, Henry
 Huber, Fabian
 Huber, John
 Huebner, Frank J.
 Jehle, John
 Joehl, Meinrad
 Jun, Edward
 Jun, Jacob
 Jun, John
 Jun, John N.
 Jun, Joseph
 Jun, Jos. T.
 Jun, Thomas
 Klasner, John
 Klasner, William
 Klebolt, F. W.
 Klebolt, Frank
 Klebolt, Joseph

Kleinschnittger, Anton
 Klinke, John
 Kolk, James
 Krug, Aloisius
 Krug, Joseph Sr.
 Krug, Joseph Jr.
 Kulp, Henry
 Kunz, John
 Leady, Henry
 Leady, Joseph
 Leady, Louis
 Leuck, Peter
 Maas, Henry
 Maas, Joseph
 Mahler, Frank J.
 Manns, August
 Manns, Frank L.
 Manns, John W.
 Martin, Gebhardt
 Meckel, Rev. Jos.
 Merkle, Frank
 Merkle, Leo J.
 Merkle, John
 Merkle, William
 Metzler, Christ.
 Metzler, Rev. Jos.
 Metzler, Joseph
 Miller, B. J.
 Miller, Chas. H.
 Miller, Frank
 Miller, Jacob
 Miller, J. B.
 Miller, Jos. H.
 Miller, Sebastian
 Misegades, John
 Nestor, Michael
 Niederkorn, Henry
 Niederkorn, J. A.
 Ohley, Edward
 Ostermann, Bernhardt
 Pieper, Frank Jr.
 Pohlmann, John
 Rathgeb, Adolph
 Rathgeb, Anton

Rathgeb, Joseph
 Rathgeb, Michael
 Reyland, Alphonse
 Reyland, Peter Sr.
 Reyland, Peter Theo.
 Rohrmoser, Frank
 Schatz, John
 Schenk, Charles
 Schenk, Henry J.
 Schenk, Joseph
 Schmidt, George
 Schmidt, Henry F.
 Schmidt, Louis
 Schmidt, John W.
 Schmidt, Wm. W.
 Schneider, John
 Schneider, Joseph
 Schneider, William
 Schroeder, John
 Schuetter, Anton
 Schuetter, Jacob
 Schulz, Bernhardt
 Schulz, Fred F.
 Schulz, Fred J.
 Schulz, Wm. F.
 Schulte, Edward J.
 Schwegel, Nicolaus
 Seibert, Charles
 Senz, Wm. H.
 Siemer, Hermann
 Spaet, Henry
 Spaniol, John Jr.
 St. Cin, G. W.
 Stahlschmidt, Frank
 Stiegler, George
 Struif, Frank
 Struif, Henry
 Struif, Joseph
 Sutterer, Anton
 Taphorn, Dr. G.
 Theisen, Phillip

Trentch, Hermann
 Uhle, Frank
 Ulmrich, Adam W.
 Ursch, Andrew
 Ursch, Joseph
 Voges, Edward
 Volbracht, Ferdinand
 Walter, Sebastian
 Wardein, Henry
 Wardein, Joseph
 Wardein, Lawrence
 Wardein, Vincent
 Weber, Frank
 Weirich, Henry
 Weirich, John T.
 Weinrich, Frank
 Weinrich, John
 Weinrich, Joseph
 Weinrich, Valentine
 Wendle, Charles
 Wendle, George
 Wendle, John
 Wendle, Nicolaus
 Wetzstein, John
 Wetzstein, Joseph Sr.
 Wetzstein, Joseph Jr.
 Wetzstein, Matth.
 Wickenhauser, George
 Wickenhauser, John
 Wickenhauser, John W.
 Wickenhauser, Joseph
 Wickenhauser, Wm.
 Wolf, John
 Wolf, Nicolaus
 Wuellner, Christopher
 Wuellner, John C.
 Wuellner, Joseph J.
 Wuellner, Joseph W.
 Wyss, S. H.
 Walter, Louis

Let it be understood that the Patron Saint of the Society, the great Apostle St. Boniface, should not be slighted. While we must strive to imitate his example we should also pray to him and

have at least once in the year, either on his feast day, June 5, or within the octave of his feast, a solemn Mass offered in his honor. And whenever the Society has its general Communion, which should be three or four times a year, the hymn in honor of St. Boniface should always be sung by the whole Society. Now that we have a beautiful banner, blessed under appropriate ceremonies, Nov. 15, and shall have this banner displayed on our general Communion days, we cannot help being reminded of this, our duty.

The present officers are as follows:

L. W. Hellrung, President.
 John W. Schmidt, Vice-President.
 Jos. Budde, Financial Secretary.
 Nicolaus Wolf, Recording Secretary.
 Vincent Wardein, Treasurer.
 Henry Dreisoerner, Marshall.
 Nicolaus Flori, Banner-carrier.

THE TRUSTEES:

Clemens Goeken	Emil Ernst
Meinrad Joehl	Fred Schulz
	Peter Reyland

THE ST. MARTHA SOCIETY.

It was established in the year 1898 for the purpose of doing needlework for the church and for the poor and to attend to the cooking at the various festivities, at which children or guests are entertained by St. Mary's Congregation. The members of this Society pay a small contribution monthly, and have their meetings every week at the club house, which was built principally for the young men in the same year 1898. The St. Martha Society has done a great deal of good in the course of years, principally for the church. And it is but just that they should be mentioned in the Souvenir as particular benefactors of the church.

Several members have died, and among these Mrs. Teresa Schenk, Mrs. Mary Schuelle, Mrs. Hannah Emert, Mrs. Elizabeth Flachenecker, Mrs. Anna Maria Grossheim, Mrs. Emma Braunagel, Mrs. Theresa Hellrung, Mrs. Cath. Buerkle, Mrs. Barbara Merkle, Mrs. Caroline Wyss, and Mrs. Rosa Beiser have shown particular interest in the affairs of the Society. The former two ladies, particularly, will ever be bright examples for the members to imitate, and their memory will be long and honored.

Mrs. Clara Snyder, Mrs. Rosa Knapp, Mrs. Josepha Gruse and Mrs. Johanna Stoehr are the present officers.



St. Martha's Society.

Berner, Catharine
 Betz, Theresa
 Budde, Helena
 Eck, Louisa
 Eckhard, Agnes
 Ernst, Theresa
 Gruse, Josepha
 Haas, Henrietta
 Hoehn, Bertha
 Horn, Adelaide
 Hufker, Helena
 Jehle, Caroline
 Joehl, Josephine
 Joehl, Mary
 Kirchof, Eliz.
 Kleeschulte, Mary
 Kleinpeter, Mary
 Klinke, Anna
 Klinke, Mary
 Kloss, Margaret
 Knapp, Rosa
 Leady, Elizabeth

Manns, Cecilia
 Meitner, Mary
 Miller, Frances
 Miller, Georgina
 Morick, Mary
 Rathgeb, Christina
 Reyland, Frances
 Reyland, Teresa
 Schmidt, Mary
 Schulz, Elizabeth
 Schwegel, Caroline
 Snyder, Clara
 Stoehr, Johanna
 Struif, Teresa
 Timper, Louisa
 Trench, Pauline
 Vanpreter, Wilhelmina
 Volbracht, Wilhelmina
 Wagner, Anna
 Wolf, Regina
 Wyss, Dorothea

FEDERATION OF CATHOLIC SOCIETIES OF AMERICA.

About the beginning of the present century there was a great deal of discussion upon the advisability of a union of Catholics for the purpose of asserting their rights as members of the church and as citizens of the republic. The sentiment was that Catholics in this republic did not enjoy such privileges as they should enjoy, and that their influence was not felt as it should be for the betterment of social conditions and for the removal of such social evils, abuses and errors, as were destructive to the welfare of the republic.

The Catholic Church, it was said, is possessed of such principles and moral power, that cannot help doing immense good if properly organized and directed. The Rt. Rev. Bishops McFaul and Messmer consulted with prominent societies and individual laymen and brought about a meeting which was held in the city of Cincinnati in the month of December, 1901. Clergymen and laymen of different nationalities and from the various states of the Union were present. A constitution was drafted and amidst great difficulties the federation was organized. The National Union of Catholic Societies was subdivided into State and County Unions and into individual societies. The various societies in a county may unite to a county federation; the various county federations may consolidate as a state federation. But the National Federation embodies all. This federation is non-political in scope, leaving its members free to espouse the cause of whatsoever political party they may choose to follow. Its aim is to regenerate society by the application of Catholic principles to social conditions, and to take its place and rank among the powers that work for the welfare of the human family, actuated by adherence to the aims of the Church and by the love of our country. In one word the federation should be the union of Catholic and patriotic activities.

No sooner had the National Federation been organized, when in December, 1902, Rev. J. Meckel, who had attended the meeting at Cincinnati, called a meeting at St. Mary's Hall and explained why the Catholics of Madison County should organize and affiliate their societies with the National Federation. At this meeting a temporary organization was effected, and a committee was appointed to confer with the Rt. Rev. Bishop Ryan. Messrs. Wm. Gschwend and Ferdinand Vollbracht called in person on the Rt. Rev. Bishop, who heartily endorsed the movement with the following statement:

St. Peter and Paul's Cathedral, Alton, Ill., Jan. 5, 1903.
To the Committee of the Federation of Catholic Societies.

Dear Sirs:

"The Bishop has already given a full and cordial approval to the Federation of Catholic Societies and he heartily approves the movement to organize in Madison County and hopes it will be promptly followed in the other counties of the Diocese.

Respectfully,

Signed:

E. L. SPALDING,
Chancellor."

A meeting was then called at the Spalding Club Rooms on February 15, 1903, and all Catholic Societies of Madison County were invited to participate. At this meeting the Federation organized and the following officers were elected:

Wm. Gschwend, President.
Peter Lafferty, 1st Vice-President.
Louis Spengel, 2nd Vice-President.
Frank Troeckler, 3rd Vice-President.
C. J. McHenry, Treasurer.
Joseph Budde, Secretary.

An Advisory Board consisting of Rev. O. J. Meckel, Rev. E. L. Spalding, Rev. P. J. O'Reilly and Rev. F. A. Meyers was also elected.

The foregoing clergy with one accord strongly advocated the advisability of pushing the matter vigorously. President Gschwend and Secretary Joseph Budde together with the Advisory Board were then instructed to draw up a Constitution and By-Laws for the next Convention to be held on May 17, 1903, at St. Mary's school hall.

Meeting May 17, 1903, at St. Mary's school hall.

All officers reelected. Constitution was read and adopted.

Object of the Federation.

Its object shall be the cementing of the bonds of fraternal union among the Catholic laity and the Catholic Societies of the county; the fostering and protection of Catholic interests; the promotion of works of religion, piety, education and charity; the study of conditions in our social life; dissemination of the truth, the encouragement of the spread of Catholic literature, and the circulation of the Catholic press.

The next Convention was held in Alton on May 28, 1904, at St. Mary's Hall, and has proven a success in every respect. Resolutions for the benefit of the Federation were adopted. Wm.

Gschwend was reelected President and Joseph Budde, Secretary. Frank Troeckler was elected Treasurer.

On May 21, 1905, the third Convention was called to order at Collinsville, and, all the officers were reelected, except that Simon Kellermann, of Edwardsville was elected 1st Vice-President.

The fourth Convention was held at Mitchell May 27, 1906, with a large attendance. Officers reelected.

On May 26, 1907, the fifth Convention was held at Highland at which the following officers were elected: Wm. Gschwend, Pres., Simon Kellermann Jr., 1st Vice-President, Wm. Niehaus, 2nd Vice-President, Martin Huber, 3rd Vice-President, Joseph Budde, Secretary and Frank Troeckler, Treasurer.

On May 31, 1908, the sixth Convention was held at Venice. All the officers being reelected.

We do not wish to enter into details; but the fact that each succeeding convention has proven a decided improvement to the preceding one tells better than anything else that the various parishes of the county have taken a warm interest in the Federation movement. A spirit of mutual good will has been created and the thought that we have been lending a helping hand in the accomplishment of the grand results, which the Federation may boast of, is ample compensation for our little efforts and inspires us to new endeavors to proclaim the message of the Federation, to show forth the numerical strength of the Catholic Church in this country and to preach its doctrines from the house tops. Catholic Federation is, as has been said, the apostleship of Catholic laymen bound to work miracles in the way of social reform.

St. Mary's has formed a new society called Pius Society, comprising all men old and young, whose aim is to further the objects of the Federation.

The officers are:

John Snyder, President.

Vincent Wardein, Treasurer.

John Wuellner, Secretary.

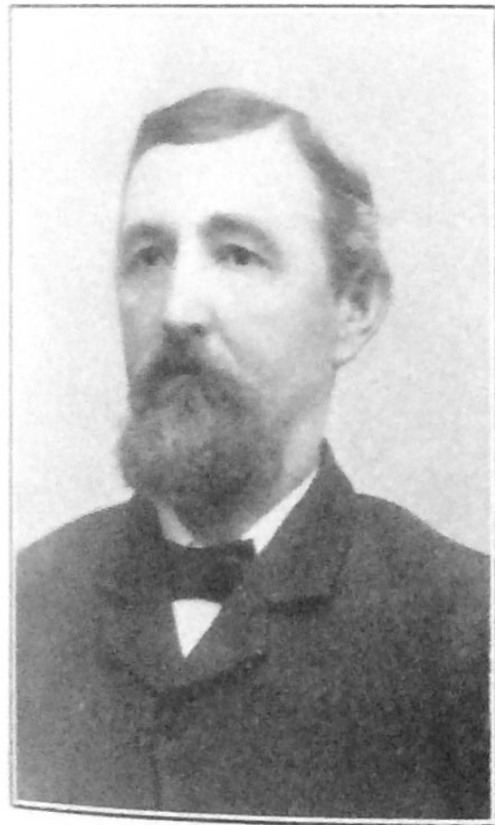
Next County Federation will take place at the county seat, Edwardsville.

MISSIONS.

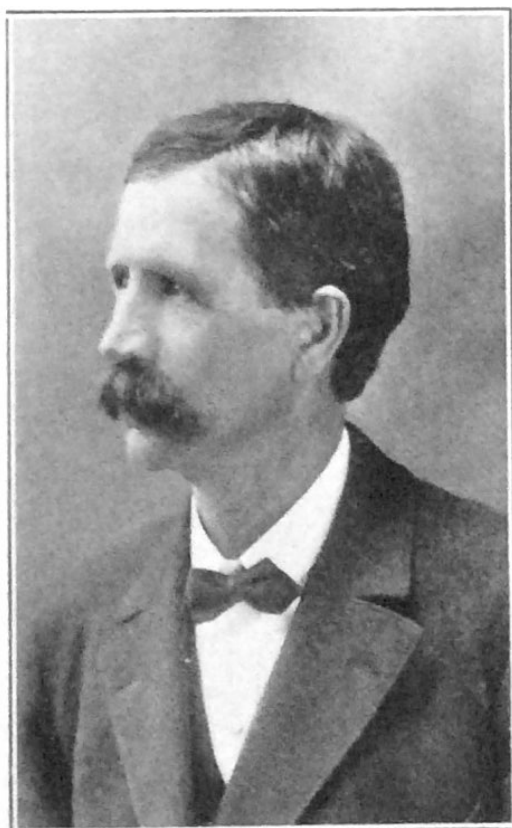
After the first Mission given by Father Wenninger, S. J., the congregation has been frequently afforded the blessing of a mission since the advent of Father Peters. The Franciscan Fathers, the Jesuits and Redemptorists have visited the congregation, and though they were not attended by immediate conversions from



*Wm. Gschwend,
President.*



*Frank Troeckler,
Treasurer.*



*Joseph Budde,
Secretary.*

OFFICERS OF THE FEDERATION.

Protestantism, many luke-warm Catholics have been brought back to the practice of their religion. But a very sad experience may also be chronicled, which showed that the neglect of attending those spiritual exercises on the part of some was followed soon thereafter by the death of those negligent ones which gave them apparently no chance of preparing for the final account at the tribunal of justice. Let this sad statement suffice to warn the careless members of the church to not miss the opportunity of making good use of the special graces which are offered from time to time and to heed the admonitions of their priests of being prepared for the hour of departure from this world.

FORTY HOURS PRAYER.

This devotion has been kept up in St. Mary's Church for many years; and it would seem that its attendance on the part of the people and the wholesome fruit thereof increases from year to year. This is a time of particular grace, the three days commencing with "Laetare" Sunday, as it has been fixed for the last twelve years. A Mission, if you will, of particular importance and as beneficial in its telling results. After all the devotion towards the Blessed Sacrament can never be emphasized too much. It is the devotion of all devotions. Jesus in our midst to teach us by his example, to strengthen us by his graces, to feed us with his sacred flesh, in one word to make us like unto himself: what could be more attractive, more reassuring of everything that is good and inspiring and redeeming? How desolate would this world be without Jesus living in our midst! It is, therefore, a very good sign, if a congregation is very much concerned about the forty hours prayer, if old and young mingle their voices in prayers and hymns to rise up to the throne of the Sacramental God like the clouds of incense. Let us ever reverence the Lord in his humble abode that we may be worthy to be lifted up to that temple above, where we shall see God unveiled and where we shall be happy with him for ever and ever.

SACRILEGE.

Six years ago, it was the night from the 14th to the 15th of April, 1902, when some ruffians dared to enter the church and demolished the tabernacle door of the High Altar, where the Blessed Sacrament is kept, and extracted the holy vessels, scattered the Sacred Hosts about the altar and carried the vessels off. The Pastor entering the church at 6 o'clock in the morning, collected

the Sacred Hosts and after Mass on that same morning pointed to the ruined tabernacle and informed the people of what frightful thing had happened during the night. An atonement service was announced at once and prayers were asked and offered that the ciborium and the case with the Sacred Host might be found. The prayers were heard. Next morning even before Holy Mass the priest was informed that the sacred vessels had been hidden under the wooden steps of Mr. Theodore Wegener's house on E. Fourth Street. The priest put on surplice and stole, betook himself to the place pointed out. People meanwhile had gathered around the place and were in the attitude of prayer, tears in their eyes. The priest knelt down, finding the Sacred Host still intact, but for a small piece taken off, and carried it together with the holy vessels to the church. There was a great excitement; all kinds of suspicion arose: but up to this day the sacriligious ruffian has not been detected. May the Lord spare him to understand what he has done and atone for it before he dies!

THE HIGH ALTAR.

The tabernacle was fixed up again, a temporary wooden door replaced the marble one. Soon a collection was taken up and the contract was let to widen the High Altar and to build a new tabernacle with all such ornaments that it practically became a new altar. Also the side altars were changed. This required the sum of about \$2000.00. Mr. Adam Morick presented a new ciborium to the church at the cost of almost \$100.00. None was more perplexed over the sacrilege than Mr. Theodore Wegener. He has died since; but he never allowed April to go by without having a Mass said in honor of the Blessed Sacrament in atonement, as it were, for the crime committed we know not by whom.

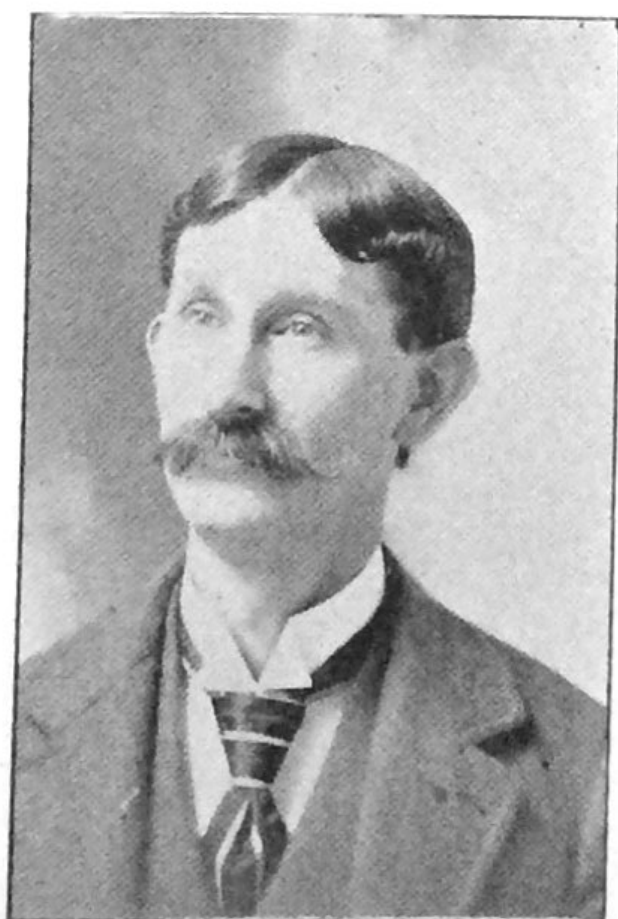
In connection with this, it may be well to mention that relics of the Holy Martyrs Boniface, Bonifacia, and Maria Anna a Jesu de Paredis are contained in the high altar. Those of the Holy Martyrs Bonifacia, Vigilans, and Justa are contained in the altar of the Blessed Virgin, dedicated under the title of Perpetual Succor. Those of the Holy Martyrs Bonifacia, Victoriana, and Honorata are contained in the altar of St. Joseph. An indulgence of forty days granted to those who visit these altars on the anniversary of the consecration.

LAWRENCE FAHRIG. *HENRY BUDDE.*

LAWRENCE FAHRIG. *HENRY BUDDE.*



A black and white portrait of a man with dark hair, wearing a suit jacket, a white shirt, and a dark tie. He is looking directly at the camera with a neutral expression. The background is a plain, light color.



A black and white portrait photograph of a man with a mustache, wearing a suit and tie. The photo is mounted on a card with a decorative border.



A black and white portrait photograph of a man with a mustache, wearing a suit and tie, looking slightly to the right. The man has short, dark hair and is wearing a dark suit jacket over a white shirt and a dark, patterned tie. The background is a light, mottled gray. The photograph is framed by a thin black border.

TRUSTEES ST. MARY'S CHURCH.

THE TRUSTEES.

There was a time in other congregations as well as in St. Mary's when the pastor was pretty well left alone to carry the burden of attending to the necessities for keeping up church and school. It is true, sometimes meetings were held and deliberations were carried on when the one or other thing of special importance was to be done. But these consultations have often been the cause of troubles and difficulties. Some one ready with the tongue, but poor in judgment and tact, would easily put the whole assembly in confusion. And when the meeting was over the grand result of hours of talk and discussion was possibly an increased dose of impediments to forestall the undertakings needed.

For this reason Bishop Baltes, of blessed memory, saw fit that two lay trustees should act with the pastor and with the Bishop and his Vicar-General to attend to the financial affairs of the congregation. These two lay trustees should be chosen by the pastor and presented to the Bishop and to be confirmed as such. It is left to the pastors to select other men as directors, who are to cooperate in such work as laymen can perform for the benefit of the congregation.

There have been, as far as the history of St. Mary's Church goes, five trustees in all, Mr. Lawrence Fahrig, Mr. Henry Budde, Mr. Joseph Merkle, Mr. John Snyder and Mr. John Merkle. Mr. Budde resigned before he had served long, because living far away in the country he was not easily at hand to attend to the duties of the Trusteeship. His successor was Mr. Joseph Merkle, who has been Trustee for more than 30 years, always willing and ready to render assistance when needed. Mr. Lawrence Fahrig was a very generous man: for the church he would make any sacrifice. He remained Trustee until he died shortly before the completion of the third church. He was succeeded by Mr. John Snyder, who certainly has done his share in supporting the church and rendering such help as was demanded. When Mr. Joseph Merkle declined in health and grew feeble, his son, Mr. John Merkle, who had been treasurer of St. Boniface Society for many years, was thought to be the right man to fill the vacancy, especially also in consideration of the great services rendered by his venerable father, who has gone to his reward.

The time will come when the duties of these trustees must be more numerous. But we have all the confidence in the world, enjoying the reputation as they do, that they will not be remiss in taking upon themselves the burden that will fall to their lot. There are excellent men in the congregation from whom trustees and directors may be chosen and who would be qualified to act

in any capacity. The difficulty is rather, whom to select than whom to find for the greater satisfaction of the people.

The tradition of St. Mary's under all previous pastors has been, to leave matters, financial and otherwise, to the pastor, more particularly the business of collecting. The people seem to think that it is good for the members of the congregation if they meet the pastor from time to time. Thus a good opportunity is given them to consult him in family affairs and to be advised for the regulation of their family affairs, if there be any need.

The pastor embraces this occasion to offer his thanks for the valuable help or assistance rendered by the various trustees to the various pastors, and he is confident that such assistance, though not always appreciated to its fullest extent, will find its full reward sometime.



ORPHAN ASYLUM OF THE ALTON DIOCESE.

The Catholic Orphanage of this city was established in the year 1883. On the grounds, now belonging to this institution, there was a residence built and formerly inhabited by a family named Lee. This afforded room for 18 children. Sisters of the Most Precious Blood, who have their mother house in Ruma, this

State, took charge of these children June 9, 1883, Ven. Mother Cecilia being the superioress. The building was soon found to be inadequate; the number of applicants increased from year to year. The Rt. Rev. Bishop Ryan had hardly been installed as the Ordinary of the Diocese when he planned and carried out an addition to the orphanage in 1889. But in a few years the Sisters were unable to accommodate the ever-increasing homeless children. A larger addition was built in 1895. However, neither did this satisfy the needs for any length of time. The Rt. Rev. Bishop Ryan resolved, therefore, to make a desperate effort. The annual collection for the orphans had hardly sufficed to keep the institution going, much less to make needed improvements. He now, in a forcible circular letter, addressed to the clergy and people of the Diocese, urged the crying demand for better accommodations. His appeal to the generosity of well-to-do people and to the various congregations was responded to beyond expectation. And in two years the amounts donated and collected were sufficient to enlarge and improve the plant in such a way as to challenge the admiration of the citizens of Alton. The institution now, with its equipments and modern improvements, and its stone wall all around the spacious property, is at once an ornament to the city and a credit to the Diocese. There is now room for 150 orphans. One hundred and ten are being cared for at the present time, under the direction of nine Sisters.

There is only one thing more missing. That is a chapel, where the children might convene morning and evening for their prayers and where the ever busy Sisters might now and then find a few moments, if not longer, the sweet recreation in company with their Savior in the Blessed Sacrament. But the time will come when also this need will be supplied. Meanwhile there is a number of charitable ladies of the Cathedral Congregation who are taking pains to assist the Sisters in the laborious work for those poor children and to furnish to the latter such enjoyments and comforts as the seasons of the year suggest. While we feel that these orphans are deprived of many things that other children receive through the solicitude of their parents, we cannot help envying them for the motherly care the good Sisters and the benefactors of the orphanage are bestowing upon them. Surely to help the orphans as is done in Catholic asylums means to do a work, the importance of which can hardly be sufficiently realized and will reap its rich reward.

ADORATION OF THE BLESSED SACRAMENT.

The Novena in honor of the Sacred Heart of Jesus is always faithfully kept in our church from Corpus Christi to the feast of the Sacred Heart. There might be a better attendance of this most beautiful devotion of the year. Since a few years we keep also the so-called Holy Hour. Thursday from three to four o'clock is the time allotted for this. While some of our people are most fervent in the observance of this hour, a great many remain away, that might attend if they had a good will. It is a most striking feature by which our time challenges our admiration. The devotion to the Blessed Sacrament and the frequency of Holy Communion is fast increasing. The Eucharistic League of Priests and that of the people are to be credited with it, and not less the exhortation of our present Pontiff, Pius X, who is most anxious to have our people return to the practice of daily Communion as it was observed in the early times of Christianity. May the process of coming to this be slow, it is bound to do infinite good and make the sacramental devotion the centre of our best efforts.



Altar Boys.

ST. MICHAELS CONREGATION, BELTREES.

Father Peters, of Alton, had some parishioners living in and near Elsah. The long distance from St. Mary's would not allow them to go to church very often. For this reason the pastor would now and then say Mass in a private house, owned by Mr. Christ. Loehr, at Elsah. But in the year 1877 a movement was set on foot to organize a new congregation. It had its effect. Encouraged by Father Peters the Catholics of Elsah and vicinity, about 35 families, concluded to build a church. The land for the



St. Michael's Church, Beltrees.

church was donated by a family named Proetzgen, and the land for a cemetery was given by Mr. Andreas Wachter. So they undertook to collect money and buy the necessary material for the church building. One man, named Phil. Spatz, was unfortunate in loading or unloading lumber for the church and was killed. The church was completed by the 9th day of March, 1878; then Father Peters came and blessed it in a solemn manner. The first visit by the lamented Bishop Baltes to the congregation took place on the third day of March, 1881. In the fall of the year the congregation built a school. Father Marks opened the same in 1886 with 20 children. Mr. Henry Schloemer was the first teacher. The priest's house was built on five acres of land bought for that purpose. Father Marks superintended this also, and you find today the land adorned by a fine orchard old enough to promise a fair crop the next season.

The priests who had been attending the congregation were the following: Father Peters until April, 1878, Rev. B. Rosmoeller from 1878 to 1885; Father Marks took great interest in the thriv-

ing congregation and attended it very faithfully from 1885 to 1898. He was followed by Rev. C. S. Bell who attended it, from Grafton, for over a year. Rev. C. F. Snyder visited the congregation rather irregularly from 1899 to 1901. Rev. J. B. Wand then took charge of the congregation attending it once every month from Brighton, where he was stationed. The school was kept up under his administration by Mrs. L. Hansen, then Miss L. Berner, and by Mrs. Hogan, until the number of the children grew so small as not to justify the expense to keep it up. Father Wand decorated



Old Settlers of Beltrees.

the church and made it appear worthy of the object for which it served. In May, 1907, he left for Europe, and the congregation was attended by different priests until Father Joseph Maurer took charge in November of that year. Since Jan. 1, 1908, the congregation returned to the original place from which it had been organized and Father Hochmiller has been attending it ever since, twice a month. On May 24th, 1908, it was on a Sunday, lightning struck the tower of the church, and in a few hours the whole church was a mass of debris and ashes. All the people could do was to save the altars and the confessional; everything else was devoured by the fire. No vestige of the organ and even of the bell was to be found anywhere.

Sad as it was, the people were not discouraged but, at once decided to rebuild the church more beautiful than before. The people of the congregation, assisted by some benefactors, accomplished their plan under the wise management and direction of Father Hochmiller, and on September 27 the church was solemnly dedicated by the Very Rev. Zabel, D. D., of Bunker Hill, Father

Hochmiller singing the first High Mass, assisted by Father Henry Becker, D. D., of Brussels, and Rev. A. Schockaert, of Grafton.

The plans for the building had been furnished by the architects Lucas Pfeifferberger and Son, and Mr. Henry Wardein, who 31 years previous to this had been baptized as the first one in the old church, was the builder of the new one.

The windows, furnished by a glass painter Other of St. Louis, had been donated by the families Wardein, Wendle, Bunse, Miss O'Hare, Joseph Schmieder, Mrs. Mary Bummer and Peter Wittmer, Miss Cunigunde Wendle and Miss E. Traeger, H. Wagner and Mrs. Elisa Hansen, family Reintges, I. M., of Mrs. M. E. Loehr, Steven Snyder, the Young Men's Sodality and Rev. Father Hochmiller. A picture of the Holy Family was given by Other of St. Louis. The organ was given by Rev. Joseph Meckel and the bell has been donated by Frank Hansen.

The trustees of the congregation have been A. Wachter and Mike Michael, Wm. Bunse, Joseph Schmieder, A. Finkes. Jos. Wardein with George Wendle are the trustees at the present time.

May the Lord bless the thrifty congregation and compensate its generous benefactors! You may find the congregation assembled in their church every Sunday and holy day of obligation. When there is no Mass, Mr. Lawrence Wardein leads the prayer. The time, we trust, will come when the St. Michael's congregation will be large enough to justify the appointment of a pastor exclusively for them.



Beltrees Members of St. Boniface Society, W. C. U.

CENSUS OF ST. MARY'S CONGREGATION,
A. D. 1908.

A

Acker, John and Louisa Maier, 1115 Union St.
Ambrose, Frank, Clemens, Mary, Lorenz, Louise.
Ahrens, † Theodore and Henrietta Loeffler, 530 E. Second St.
Emma.
Albrecht, Miss Paulina, 624 East Fourth St.
Aldinger, (m) John and Emma Ziegenfuss, 637 East Fourth St.
William, Julia, Bertha, Richard, Alfred, Victor.
Angel, † Nicholas and Anna Mauer, Upper Alton.
Nicholas, Anthony, Margaret, Frances.
Atland, (m) Henry and Caroline Gottlob, 522 East Third St.

B

Baecker, John and Bertha Lenz, 417 Cherry St.
Richard, Anna, John, Mary, Lizzie, Gerthie, Catharine.
Basse, George and Emma Deucker, 711 East Sixth St.
Albert, Emil, Wallace Deucker.
Baumeister, Herman and Theresa Maul, 516 East Third St.
Leona.
Richard, Anna, John, Mary.
Bauer, Ludwig and (m) Louisa Depken.
Bauer, (m) William and Caroline Ernst, 634 E. Third St.
Bazany, Werner and Johanna Biemeck.
Gilbert, John, Peter, Michael.
Boehm, Louis and Mary Gerlach, 1033 Union St.
Beiser, (m) William and Theresa Gargis, 912 E. Fifth St.
August, Louis.
Bensmann, Andrew and Henrietta Walter, North Alton.
Mary, Theresa, Andrew, Anna, Joseph, Jacob, Michael.
Berger, Philip and Louise Zeller, Upper Alton.
Philippine, Henry, Henrietta, Lilia.
Berghoff, Henry and Mary Wulf, Fosterburg.
Sophia, Fred, Julia, August, Rebecca, Berthel.
Berghoff, Joseph, Jr, and Adelheid Klinke, Bethalto.
Berghoff, Joseph and Mary Klebolt, Fosterburg.
Josephine, Leona, Frank, Elizabeth, August, Viola, Sabina.
Berner, Fred and Clara McDonnell, 830 East Fourth St.
Fred, James.
Berner, John and Catharine Federle, 500 East Second St.
Elizabeth, Leo.
Berner, John jun. and Laura Ridder, 514 East Third St.
John.

Berner, Mrs. Theresa, 500 E. Second St.
 Berry, (m) Benjamin and Louise Stumpf, 460 East Second St.
 Otis, Henry, Mary.
 Bertmann, William and Bertha Hibbeler, 535 East Sixth St.
 Hilda, Aloysius, Bertha.
 Betri, (m) Hugo and Theresia Muck, 723 East Sixth St.
 John, Eleonora, Anna, William.
 Betz, † Louis and Theresa Richter, 2614 State St.
 Ferdinand, Louisa, Adolf.
 Bickel, † Louis and Mary Kohler, 513 Liberty St.
 Biewer, Clara, Agnes.
 Bissinger, Louis and Josephine Joehl, 538 East Seventh St.
 Mary.
 Bissinger, William and (m) Carrie Stierley, 620 East Fourth St.
 Bohmann, John and Catherina Held, 136 West Second St.
 Mary.
 Boppa, Herman and Catherine Stahl, 824 East Third St.
 Borntrager, Nicholas and Mary Malone, 505 Washington St.
 Lawrence, Charles, Ellen, Thomas.
 Bertier, Mathias and Anna Ursch, 623 East Eighth St.
 Eleanora.
 Boschert, Joseph and Mary Hartmann, 711 East Sixth St.
 Boschert, Martin Sr. and † Caecilia Gerwitz, 322 Royal St.
 Boschert, Martin Jr., and Bridget Convey, 622 East Ninth St.
 Walter, Felix, Paul, Louisa.
 Boschert, Edward and Maria Burg, 713 East Sixth St.
 Bertha, Mary, Albert.
 Boschert, Leo and † Rosa Cahill, 713 East Sixth St.
 Edward.
 Boschert, Frank and Maria Arnold, 1719 Liberty St.
 Brandt, Charles and Francisca Klinke, Wood River.
 Lucy.
 Braunagel, Emil and Lousia Ehret, 822 East Third St.
 Mary, Lucy, Henry, John, Josephine, Agatha, Wilhelmina, Aloys.
 Braunagel, Frank and † Emma Schneider, 824 E. Third St.
 Joseph.
 Bregenzer, Jacob and Justina Hellrung, 610 Hoffmann Ave.
 Henrietta, Elizabeth.
 Brinkmann, Benjamin and Anna Greve, Godfrey.
 Mary A. Haag.
 Brown, Joseph and Mary Jun, 638½ East Fourth St.
 Joseph, Elmer.
 Brucker, Jacob and Elizabeth Dunschen, 813 Stanton street.
 Brumleve, Philipp and Margaretha Angel.
 Johanna.

Berner, Mrs. Theresa, 500 E. Second St.
 Berry, (m) Benjamin and Louise Stumpf, 460 East Second St.
 Otis, Henry, Mary.
 Bertmann, William and Bertha Hibbeler, 535 East Sixth St.
 Hilda, Aloysius, Bertha.
 Betri, (m) Hugo and Theresia Muck, 723 East Sixth St.
 John, Eleonora, Anna, William.
 Betz, † Louis and Theresa Richter, 2614 State St.
 Ferdinand, Louisa, Adolf.
 Bickel, † Louis and Mary Kohler, 513 Liberty St.
 Biewer, Clara, Agnes.
 Bissinger, Louis and Josephine Joehl, 538 East Seventh St.
 Mary.
 Bissinger, William and (m) Carrie Stierley, 620 East Fourth St.
 Bohmann, John and Catherina Held, 136 West Second St.
 Mary.
 Boppa, Herman and Catherine Stahl, 824 East Third St.
 Borntrager, Nicholas and Mary Malone, 505 Washington St.
 Lawrence, Charles, Ellen, Thomas.
 Bertier, Mathias and Anna Ursch, 623 East Eighth St.
 Eleanora.
 Boschert, Joseph and Mary Hartmann, 711 East Sixth St.
 Boschert, Martin Sr. and † Caecilia Gerwitz, 322 Royal St.
 Boschert, Martin Jr., and Bridget Convey, 622 East Ninth St.
 Walter, Felix, Paul, Louisa.
 Boschert, Edward and Maria Burg, 713 East Sixth St.
 Bertha, Mary, Albert.
 Boschert, Leo and † Rosa Cahill, 713 East Sixth St.
 Edward.
 Boschert, Frank and Maria Arnold, 1719 Liberty St.
 Brandt, Charles and Francisca Klinke, Wood River.
 Lucy.
 Braanagel, Emil and Lousia Ehret, 822 East Third St.
 Mary, Lucy, Henry, John, Josephine, Agatha, Wilhelmina, Aloys.
 Braunagel, Frank and † Emma Schneider, 824 E. Third St.
 Joseph.
 Bregenzer, Jacob and Justina Hellrung, 610 Hoffmann Ave.
 Henrietta, Elizabeth.
 Brinkmann, Benjamin and Anna Greve, Godfrey.
 Mary A. Haag.
 Brown, Joseph and Mary Jun, 638½ East Fourth St.
 Joseph, Elmer.
 Brucker, Jacob and Elizabeth Dunschen, 813 Stanton street.
 Brumleve, Philipp and Margaretha Angel.
 Johanna.

Brunner, John and Mary Metzler, 715 East Third St.
 Sophie, John, Edna, Bertha.
 Budde, August and Emilia Massula, Godfrey.
 Anna, Clara, Mary, Elizabeth, Agnes.
 Budde, John and Anna Stiens, Godfrey.
 Henry.
 Budde, Christopher and Elizabeth Manns, 920 East Sixth St.
 Ida, Mary, Raymond.
 Budde, Bernard and Rebecca Harris, Fosterburg.
 Paul, Maria, Clarence.
 Budde, Frank and Emma Recher, Fosterburg.
 Aloys, Lilia, Emilia, Florence.
 Budde, Frank and Helena Weirich, 914 Clement Place.
 Elizabeth, Theresa, Alphonse, Mary, Helena, Lucile, Frank, Chas.
 Dorothea.
 Budde, Henry and Theresa Reessmann, 636 North St.
 Budde † John and Therese Hellrung, 801 Henry St.
 Budde, August and Emilia Recher, Fosterburg.
 Budde, Joseph and Elizabeth, 816 Arch St.
 Budde, Joseph and Elizabeth Joehl, 816 Arch St.
 Mary, Leo, Emil, Walter, Otto, Irene.
 Budde, Mary, John, 816 Arch St.
 Buese, John and Mary Dueringer, 1403 Bloomfield St.
 John, Mary, A. Joseph.
 Buesser, † Jacob and Magdalena Joehl, 1222 Union St.
 Jacob.

C

Caldwell, Alexander and Josephine Kleinpeter, 712 East Fifth St.
 Margareth, Josephine, Emil, Frank, Archibald, Henry, Leonard,
 Raymond, Walter, Oscar.
 Camp, William and (m) Anna Recher, North Alton.
 William, Alice, Harriette.
 Cappelle, Henry, 807 East Third St.
 Coleman, (m) Mary Ludwilla Hauri, 1442 East Third St.
 Christian, † George and Wilhelmina Klebolt, 1021 E. Sixth St.
 John, George.
 Cilien, Joseph and Wilhelmina Teppe, 908 East Fourth St.
 Crowe, Mary, Bertha, Agnes, 1222 Union St.
 Crow, (m) James and Theresia Fahrig, Fletcher St.
 Catherina, Theresa, John, Bertha.

D

Dannemann, Henry J. and Matilda Gerwolf, Grand Ave., S. Alton.
 Matilda, Henry.
 Daubman, (m) George and Bertha Hartmann, 819 Union St.

Degenhardt, Albert and Anna McCarthy, 537 East Seventh St.
 Bertha, Bernard, Albert, Joseph, Edgar, Louis.
 Detten, † John and Anna Barths, Godfrey.
 Frank
 Deucker, Henry and (m) Elizabeth Reher.
 William, Henry, Louis, Edward, Florence, Roy.
 Dietz, † Philip and Wilhelmina Ehrhardt, 1100 E. Second St.
 Rebecca, Frank, Anthony, Theresa, Adam, Gustave.
 Deuker, Mrs. Mary, Sixth St.
 Donner, Jerome and Martha Schitter, North Alton.
 Bertha, Matilda, Anna, Theresa.
 Dreisoerner, † Conrad B. and Matilda Butz, Garden St. Upper Alton.
 Henry.
 Drexelius Bernhard and Stanislava Depke, East Alton.
 Drexelius, John and Anna Hesse, Fosterburg.
 Mary, Christina, Regina, John, Joseph, Anna, Henry.
 Drexelius, Anthony and Catherina Delleke, Fosterburg.
 Anthony.
 Droste, Theodore and † Catherine Kappel, Godfrey.
 Catherine, Frances, Theodore, John.
 Dunschen, Benjamin and Catharine Leady, 639½ East Third St.
 Elizabeth M., Cletus, Emma.
 Dunschen, † Henry and Josephine Joehl, 634 E. Fourth St.
 Josephine, Clara, Elizabeth.

E

Eck, Richard and Lucy, 26 West Second St.
 Rosa, Charlotte Maria.
 Eckhard, John, 528 East Second St.
 Eckhardt, Joseph and Laeta Robinson, 313 Monument Ave.
 Lucille.
 Eckhard, Chris. and Agnes Joehl, 721-723 East Second St.
 Josephine.
 Eckhard, Henry and Caroline McGuire, 1208 North St.
 Elizabeth.
 Edwards, † Thomas and Louise Pape, 719 E. Fifth St.
 Charles, William.
 Ehrhard, † Anthony and Ida Keller, 901 E. Second St.
 Anthony.
 Ehret, Joseph, 824 East Third St.
 Ehret, John and Elizabeth, 1302 Belle St.
 Eichelmann, Anna, William, 706 East Second St.
 Eichorn, Frank and † Catherine Lamb.
 John.
 Eikel, Frank, St. Joseph's Hospital.
 Elble (m) John and Anna Ahrens, 230 Alby St.
 Bernard, Henrietta.

Elfigen, Henry and Mary Geppert, 1104 Garden St.
 Frances, Louis, Henry.
 Elfigen, † Joseph and Catharine, North Alton.
 Emilie.
 Elfigen, Berthold and † Lena Mayerhofer, Mather St., North Alton.
 Margaretha, Lucilla, Helena, Berteline.
 Ernst, (m) Henry and Caroline Hanolt, 636 East Third St.
 Ernst, Emil and Theresa Denker, 640 East Second St
 Henry, Alvina.
 Esche, Max and Fanny Reif, Upper Alton.
 Linda.

F

Fahrig, Bernard and Josephine Denz, 1129 Hampton St.
 Theresa, Ferdinand, Mary, John, Margaretha, Dorothea.
 Fahrig, Bernard and Theresa Ursch, Milton Road.
 Fahrig, Dorothea, Francisca, 806 East Second St.
 Fahrig, Henry and (m) Wilhelmina Feltrich, 930 Union St.
 Carrie, Edward.
 Fahrig, John A. and Mary D. Oklass, 817 Liberty St.
 Mary, Eugenia, Addelheid, Margaret, Helene, John, Eugene.
 Fahrig, † Ignaz and Catharina Lellpopp, 930 Union St.
 Fahrig, Lawrence and Dora Janssen, 801 Liberty St.
 Lawrence, John, Theresa.
 Federle, Miss Mary, 410 East Twelfth St.
 Finkes, Martin and Wilhelmine Albrecht, 200 East Seventh St.
 Pauline, Francis, Joseph.
 Finley, John and Mary Hellrung, 619 East Seventh St.
 Joseph, Leo.
 Fischbach, † Martin and Christina Elble, 620 Weigler St.
 Augusta, Louisa.
 Flachenecker, Charles and (m) Mabel Sommers, 817 Arch St.
 Lucilia.
 Flachenecker, George and (m) Mary Champion, 1120 East Fifth St.
 Theresa.
 Flachenecker, Leonard and † Elsa Kurzweiler, 1120 E. Fifth St.
 William, Joseph.
 Flori, Jacob and Amelia Linn, Pearl St. Upper Alton.
 Charles, Philip, Mary, Aloysius, Joseph, Frank, Michael.
 Flori, Nicholas and † Mary Schmidt, 204 E. Seventh St
 Rosa, Bernard, Anthony.
 Flori, William and Charlotte Schmidt, 629 North St.
 Helen, Clara, John, Theresia, Anna.
 Fox, Alexander and Cacilia Larose, 620 East Third St
 Alexander.
 Frederick, (m) John and † Emma Merkle, 1700 North St.
 John.

Friedrich, Christian, 400 East Second St.
Froehli, Mary, 638 East Fourth St.
Fuchs, † Peter and Sophia Zeller, Upper Alton.
Peter, Ludwig, Johanna, William, Margaret.
Fuller † (m) Asa and Elizabeth Ulmrich, 811 E. Fourth St.

G

Gaston, Thomas, 132 West Second St.
Ellis, Harry.
Geissal, (m) Henry and Theresa Winnenberg, 1200 Alby St.
John, Fred, Amelia, Louis, Leo, Agnes.
Geiben, John and Maria Schitter, West Alton.
Gent, Anna, 1419 Henry St.
Gerard, James and Anna Jansen, Upper Alton.
Rosa, Eveline Berenice, James.
Gerber, Henry and Elizabeth Kunkel, 1123 Pearl St.
Clara, Elizabeth, Henry, Arthur, William, Alice.
Girth, (m) John and Rosa Boschert, Royal and Elm Sts., 327.
Frank, John, Bernard, Caecillia, Joseph, Edward, Rosa, Henry,
Mary, Albert, George.
Gissler, John and Mary Rottler, North Alton.
Mary, Elizabeth, Leo.
Gleich, (m) Louis and Mary Boschert, 910 East Third St.
Blandina.
Goebler, Felix and Dora Evan, Park, near College, Upper Alton.
Goeken, Albert and Barbara Seibert, 514 East Fourth St.
Albert Le Roy.
Goeken, Clemens and Catherine Bruch, 520 East Fourth St.
Clara, Victor, Joseph, Caroline and Albert Federle.
Goeken, George and Mary Mohrmann, 504 East Fifth St.
Leo.
Gottlob, Bernard and Louisa Altvogt, 624 East Fourth St.
Joseph.
Gottlob, Miss Sophie, 522 East Third St.
Graf, Charles and † Anna Vogel, 822 E. Second St.
Joseph.
Gramlich, Louis and Dora Hartmann, 802 Bloomfield St.
Rosa Mary.
Grenzebach, (m) Gustave and Catherine Elfgen, North Alton.
Gustave, Pearl, Mary, Fred.
Greve, Frank, Godfrey.
Greve, John and Fannie Holliday, North Alton.
Mary, Lillie, Harry, John.
Grossheim, George and Mary Hentrich, 522 Oak St.
Joseph, Theresa, Bertha, Charles, John, Alphonse.
Grossheim, Joachim and † A. Mary Weinhardt, 512 Oak St.

Grossheim, John and Clara Kaeser, 512 Oak St.
 Louis, Edmond
 Grossheim, Otto and Sophia Renz, 313 Apple St.
 Gruen, William and Mary Drewery, 2200 Hollman St.
 Gruen, Michael, 2200 Hollman St.
 Grunnel, Hy. Philipp and Lucilla Dignan, 214 Monument St.
 Anita, Raymond.
 Gruse, John and Josepha Schmidt, 905 Royal St.
 John, Mary, Sophia, Rosa.
 Gschwend, William and Mary Schwaess, 1131 Warren St.
 Mary, Matilda, William, Emilie, Josephine, Joseph, John Alphonse.
 Guertler, Peter and Catherine A. Hundt, 101 East Fifteenth St.
 Walter, Otilia.
 Gundall, Adam and Rosa, 610 East Seventh St.
 William.

H

Haas, Julius and Henrietta Chessen, 930 East Second St.
 Hattie, Mary, Helena.
 Haas, William and Julia Ringering, 1008 East Second St.
 Hanei, † Frank and Mary Tischler, Yager Park.
 Herman, Frieda, Frank Isedori.
 Harris, William and Julia Riecher, Fosterburg.
 Ethel, Gertrud, Rudolph, Lucille, Douglas, Henry, August.
 Hartmann, Henry and Dorethea Fahrig, 801 Liberty St.
 Berenice.
 Hartmann, Jacob and Josephina Stolze, 730 East Fourth St.
 John, Mary, Albert.
 Hartmann, Elizabeth, 525 East Fourth St.
 Hartmann, † Lawrence and Elizabeth Scheidinger, 819 Union St.
 John, Frank, Theresa, Emerentia.
 Hartmann, Peter and Theresa Janssen, Vandalia Road.
 Peter, Martin, Mary, Theresa, Lawrence, Joseph, Bertha, Rosa, George, Henry.
 Hassler, Joseph and Catherine Schwartz, East Alton.
 Josephine, Clara, John, Mary, Magdalene.
 Hauck, August and Francis Brady, 1019 Diamond St.
 Earl, Bernard.
 Hauck, William and Elizabeth Setton, 1401 Bloomfield St.
 Ella, Cyrill.
 Hauck, Miss Catherine, 513 Liberty St.
 Haunsperger, Simon and Philomena Schwartz, Upper Alton.
 Philomena, Simon, Anna.
 Hefner, † Joseph and Josephine Kaiser, 1210 E. Second St.
 Henry, William, Anna, Leo, Emil.

Heidrich, Charles and Theresa Gruse, 900 Union St.
 Frank, Joseph, Anthony, Edward, Bartholomew, Mary.
 Heintz, Victor and Catharina Schoenerer, 328 Dry St.
 Charles, Mary, Frank, Victor, Leo.
 Hellrung, Christopher and Ida Fehr, North St.
 Hellrung, † Christopher and Mary Budde, 1123 E. Sixth St.
 Hellrung, Henry C., and Clara Jun, 1114 East Sixth St.
 Clara, Henry.
 Hellrung, Henry and Theresa Pape, 1432 Harrison St.
 John, Charles.
 Hellrung, Joseph and Christina Burr, 723 East Fifth St.
 Joseph, Anna.
 Hellrung, John and Jennie Kaufgold, 1600 Belle St.
 Mary, Francisca, John.
 Hellrung, Lawrence and Julia Acker, 1111 East Sixth St.
 Mary, Herbert, Frances.
 Hellrung, Lawrence and Francis Nolte, 620 North St.
 Mervin, Maria, Dolores.
 Hellrung, Barth, Catharina, Juliana, Genofeva.
 Henkel, † Helwig and Frances Buns, 447 E. Second St.
 Frederick.
 Hellrung, Peter and † Theresa Fahr, 610 E. Seventh St.
 Charles.
 Henkhaus, Henry and Julia Hesse, Yager Park.
 Mary, Anna, Edward, Ida, Victor.
 Henkhaus, John and Beatrice Stanton, Yager Park.
 Henkhaus, Mrs. Josephine, North Alton.
 Henkhaus, † John and Florentine Wittmer, 960 Union St.
 Hentrich, William.
 Hentrich, † John and Therese Bensmann,
 Gertrude, John.
 Herren, Harry and Agnes Miller, 1008 East Sixth St.
 Margarethe, Agnes, Loretta, Hazel.
 Hess, Emil and Francisca Reis, 1230 East Second St.
 Fred.
 Hesse, Ferdinand and Mary Greve, Fosterburg.
 Hesse, John and Gertrud Sutter, Fosterburg.
 Anna, Leo, Mary, John, Louis, Gertrud.
 Hibbeler, † John W. and Bertha Gottlob, 535 E. Sixth St.
 Hindrichs, Albert and Evelina Eckhoff, 720 Clement Place.
 Hoehn, John and Bertha Ernst, 636 East Third St.
 George, Emil, John.
 Hoettger, Henry and Francisca Budde, 820 Arch St.
 Josephine, Wilhelmina, Henry, Sylvester, Gertrud, Mary, Anna.
 Horn, Casper and Adelheid Knetzger, 416 East Second St.
 Adelheid, Louis, Casper.

Howard, Adolph and Clara Stolze, 625 Jackson St.

Viola.

Huber, Fabian and Sophia Rathgeb, 1806 Garden St.

Emil, Albert, Eugenia, Sophia.

Hufker, † Joseph and Helena Thelken, 115 Grafton Road, North Alton.

Joseph, Henry, William, Helena, Mary, Anna.

Henkle, Mrs. Mary, Second and Langdon Sts.

Huebner, Frank, 517 East Third St.

J

Janssen, Mrs. Maria A., Nazareth Home.

Jehle, † John and Caroline Wiegand, 1100 Alby St.

Lena, John.

Joehl, † Casper and Josephina Haemmerli, 634 E. Fourth St.

Joehl, Louis and Veronica Manns, Godfrey.

Walter, Robert, Ella, Leo, Clara, Paul, Raymund.

Joehl, Meinrad and Mary Grossheim, 811 East Second St.

Edward, Hildegard, John, Albert, Viola, Alvina, Fred.

Joerger, August and Catharine, 63 East Twelfth St.

Johnson, Edmund and Maria Schmiz, Garden St.

Ada.

Jun, Edward and Mary McBride, 647 East Fourth St.

Roland, Albert.

Jun, John and Anna Uffert, 732 East Second St.

Rosa, Leona Hilda.

Jun, Jacob and † Mary Spangenberger, 818 Union St.

Jun, John and Rosa Girsch, 1025 Diamond St.

Leo, Henry, Mary, Agnes, Louis, Bertha.

Jun, Joseph and Apollonia Manns, 207 Spring St.

Dorothea, Joseph.

Jun, Joseph and Mary Weirich, 1027 Diamond St.

Gertrude, Anthony, Edna.

Jun, Miss Theresa, 818 Union St.

Jun, † Thomas and Mary Gibbs, 647 E. Fourth St.

Bernard, Charlie.

Jun, Thomas and Flora Twitchel, 641 East Fourth St.

Erwin.

K

Kaiser, (m) Henry and Josephine Meinhofer, Mather St.

Leone, Anthony, Henry, Margareth, Mary.

Kasener, Frank and Maria Niederkorn, Upper Alton.

Joseph.

Keller, William and (m) Anna Fitzinger, 1115 East Fourth St.

Josephine, Charles, Lillian, Edith, Helena, William.

Kelly, William and Anna Lippold, 204 Henry St.
 Stephen, Joseph, Mary, Ruth, Caccilia.
 Kern, Anthony and Frances Mohrmann, East Third St.
 Kirbach, Frank and Rosa Rohak, 1006 Diamond St.
 Kesten, (m) Henry and Catherina Metz, 1207 Union St.
 Kinsella, Martin and Maria Maul, 619 East Second St.
 Kirchoff, † John and Francisca Ledi, 731 E. Fifth St.
 William.
 Katling, † George and Anna, 810 E. Second St.
 George, Anna.
 Klasner, John and Louisa Miller, 1012 East Sixth St.
 Clara, Clarence, Rosalie, Lucille.
 Klasner, Joseph and Margaret Maier, 649 East Fourth St.
 Agnes, Anna, Catherine.
 Klasner, Mathias, North Alton, Tel. 3274.
 Mary, Agnes Pitts.
 Klasner, William and Wilhelmina Manns, 619 North St.
 Fred, Emil, Louisa, William, Angela, Leonia.
 Klebolt, Frank and Alice Benson, 1208 East Fifth St.
 Mary, Eizabeth, Hilda, Frederick, Anna.
 Klebolt, Frank W. and Katherine Merkle, 1020 Union St.
 Kebolt, † Anthony and Wilhelmina Wittmer, 974 Union St.
 Klebolt, Joseph and Mary Kolb, 1114 Green St.
 Viola
 Klebolt, William and Mary Bockstroh, 927 East Third St.
 Joseph, Warren, Hilda, William.
 Kleffner, Fred and Theresa Dunschen, 2231 Common St.
 Werner, Lizzie, Joseph, Wilhelm.
 Kleeschulte, Mary 620 Weigler St.
 Kirchhoff, Joseph and Adeline Cox, 652 East Second St.
 Myrtle, Amos.
 Kleinpeter, † Jacob and Anna, Maria Wagner, 715 E. Fifth St.
 Kleinpeter, Edward and Lily Percival, 1310 State St.
 Margaretha.
 Kleinschnittger, Frank and Anastasia Hilbert, 820 E. Third St.
 Mildred, Lilia, Frank.
 Kleinschnittger, John and Amelia Maier, 707 Henry St.
 John, Amelia, Leo, Edward.
 Kleinschnittger, Anthony and Mary Hoettger, Upper Alton.
 Klinke, John and Mary Schenk, 1010 East Fifth St.
 Eleonora, Margareth, Florence, Adele, William.
 Klinke, Lawrence and Anna Budde, 559 E. Second St.
 Adelheid, Anna.
 Klinke, Theresa, Fred, Fosterburg.
 Klinke, Peter and Carrie Benway,
 Frances, Mary, Albert, Adelheit, Edgar, Anna.

Kloss, † John and Margareth Flori, 204 E. Seventh St.
 Knapp, † Oswald and Rosa Mauch, 523 Oak St.
 Eugene, Mary, Oswald, Victor.
 Koeller, August and Bernardine Droste, Godfrey.
 Theresa, Elizabeth, Louisa, August, Frances, Anna, Henry,
 Mary.
 Koeller, Fred and Theresa Ressmann, 103 East Twelfth St.
 Koenig, Christian and Anna Schuler, Upper Alton.
 Jacob, Henry, John, Mary.
 Kolk, James and Mary Wolf, 1111 Union St.
 Thecla, Paul, Margarethe.
 Kortkamp, † William and Maria Baumann, Fourteenth and Alby Sts.
 Emma.
 Kratschmer, Fred and Anna Zimmermann.
 Mary, Fred, Frank, Emil, Theresa, Edith.
 Kremer, Peter and † Catharine Rademacher, 6 W. Seventeenth St.
 Krug, Joseph and Elizabeth Blum, State St., near North Alton.
 Barbara, Catharine, Elizabeth, Anna, Clara, Stella.
 Kuntz, John and (m) Catharine Christopher, 1212 East Third St.
 Paulina, William, Charles, Fred.
 Kulp, Henry and Lena Held, 128 West Second St.
 Bertha, Rosa.

L

Lampert, Joseph and Theresa Gottlob, 535 East Sixth St.
 Lampert, Mary, 624 East Second St.
 Lang, † John and Mary Snyder, 1314 Pearl St., cor. Vandalia St.
 William, Clara, Joseph (Richardson).
 Lachance, Joseph and Lena Thomas, 552 East Second St.
 Alfred.
 Ledy, Henry and Lena Pfeiffer, 216 East Sixteenth St.
 Amelia, Henry, John, Mildred, Raymond.
 Ledy, Joseph and Caroline Budde, 801 Henry St.
 Josephine, Frieda, Elmer, Caroline.
 Ledy, Louis and Anna Pfeiffer, 418 East Fourteenth St.
 Elizabeth, Catharine, George, Joseph, John, Clara, Edward.
 Ledy, † Philip and Elizabeth Brown, 115 W. Fourth St.
 Emilia, August, Maria, Joseph.
 Leitner, Oscar and Wilhemina Eden, East Alton.
 Lilia, Arthur.
 Leuck, Peter and Mary Manns, 906 East Fourth St.
 A. John A. Peter, Alois, Rosa.
 Lowe, W. A. and Anna Niederkorn, 1050 Tremont St.
 George, Aloysius, Helena, Agnes.
 Luecker, Conrad, Mary, Godfrey.

Kloss, † John and Margareth Flori, 204 E. Seventh St.
 Knapp, † Oswald and Rosa Mauch, 523 Oak St.
 Eugene, Mary, Oswald, Victor.
 Koeller, August and Bernardine Droste, Godfrey.
 Theresa, Elizabeth, Louisa, August, Frances, Anna, Henry,
 Mary.
 Koeller, Fred and Theresa Ressmann, 103 East Twelfth St.
 Koenig, Christian and Anna Schuler, Upper Alton.
 Jacob, Henry, John, Mary.
 Kolk, James and Mary Wolf, 1111 Union St.
 Thecla, Paul, Margarethe.
 Kortkamp, † William and Maria Baumann, Fourteenth and Alby Sts.
 Emma.
 Kratschmer, Fred and Anna Zimmermann.
 Mary, Fred, Frank, Emil, Theresa, Edith.
 Kremer, Peter and † Catharine Rademacher, 6 W. Seventeenth St.
 Krug, Joseph and Elizabeth Blum, State St., near North Alton.
 Barbara, Catharine, Elizabeth, Anna, Clara, Stella.
 Kuntz, John and (m) Catharine Christopher, 1212 East Third St.
 Paulina, William, Charles, Fred.
 Kulp, Henry and Lena Held, 128 West Second St.
 Bertha, Rosa.

L

Lampert, Joseph and Theresa Gottlob, 535 East Sixth St.
 Lampert, Mary, 624 East Second St.
 Lang, † John and Mary Snyder, 1314 Pearl St., cor. Vandalia St.
 William, Clara, Joseph (Richardson).
 Lachance, Joseph and Lena Thomas, 552 East Second St.
 Alfred.
 Ledy, Henry and Lena Pfeiffer, 216 East Sixteenth St.
 Amelia, Henry, John, Mildred, Raymond.
 Ledy, Joseph and Caroline Budde, 801 Henry St.
 Josephine, Frieda, Elmer, Caroline.
 Ledy, Louis and Anna Pfeiffer, 418 East Fourteenth St.
 Elizabeth, Catharine, George, Joseph, John, Clara, Edward.
 Ledy, † Philip and Elizabeth Brown, 115 W. Fourth St.
 Emilia, August, Maria, Joseph.
 Leitner, Oscar and Wilhemina Eden, East Alton.
 Lilia, Arthur.
 Leuck, Peter and Mary Manns, 906 East Fourth St.
 A. John A. Peter, Alois, Rosa.
 Lowe, W. A. and Anna Niederkorn, 1050 Tremont St.
 George, Aloysius, Helena, Agnes.
 Luecker, Conrad, Mary, Godfrey.

Luecker, Louis and Catharine Manns, 924 Fountain St.
Lawrence, Aloys, Louisa, Margaretha, Mary, Frieda.
Luer, August and Helena Scharf, Upper Alton.
Viola, August, William.

M

McQuery, William and Pauline Schmiz, Vandalia St.
Maas, † Henry and Theresa Droste, North Alton.
William, Joseph, Mary, Anthony, Fred, Theresa.
Maas, Henry and Helena Meissner, 1217 East Sixth Street.
Charles, Helena Meier; Henry, Anthony.
Mahler, Frank and Anna Wolf, 1125 North St.
Rosa, Leo, Frank, Celeste.
Manns, August and Rosa Daub, 1305 Bloomfield St.
August, Frida, Walter, Earl, Lavern.
Manns, Frank and Catharina Berghoff, 512 Main St., Upper Alton.
Florence, Victor, Eldridge.
Manns, John and † Veronica Seifert, 908 E. Fourth St.
Manns, Frank and Helena Senz, 800 E. Second St.
Leone.
Manns, John H. and Maggie Kinsella, 1001 Union St.
Sophie, Charles, Albert, Margareth.
Manns, John W. and Cecilia Morick, 956 Pearl St.
Adam, Joseph.
Manns, Joseph and Mary Berghoff, Godfrey.
Leo, Leona, Lilly.
Manns, William and Ida Brandt, Fosterburg.
Louis, Henry, Fred, Ida.
Manns, William and † Elizabeth Grue, 646 North St.
Manns, William H. and Mary Releke, 1108 Putnam St.
Charles, Fred, Veronica.
Marshall, (m) Charles and Antoinette Wyss, 1015 E. Fifth St.
Mathieu, Fritz and Mary, Upper Alton, 921 Garden St.
Regina, Lilian.
Maul, † John and Otilia Boschert, 823 E. Third St.
John, Mary, William, Albert.
Maul, Joseph and Caroline Arens, 436 E. Third St.
Theodore, Gertrud.
Maul, Paul and Theresa Meissner, 513 Walnut St.
Blanche, Mary, Florence, Fred, August, Henry.
Meisenheimer, (m) Philipp and Elizabeth Wieschaus, 634 North St.
Dorothea, Bertha.
Meierhofer, † Eugene and Margaretha Barnett, Mather St., North Alton.
Meitner, John and Mary Leady, 115 W. Fourth St.
William.
Merick, Bertha, 10 E. Twelfth St.

Merkle, Frank and Augusta Formhals, 960 Union St.
 Merkle, John and † Helena Klasner, 322 Ridge St.
 Bertha, Ida, Agnes, Anna, Helena.
 Merkle, William, Leo, 501 Shields St.
 Merkle, Joseph and Josephine Fehr, Shields St.
 Merkle, † Wiliam and Emilia Froehli, 638 E. Fourth St.
 Clarence, Roy, Virginia, Bernardette.
 Merkle, William and Mary Theissen, North Alton.
 Magdalene, Bernard, Aloysius, Elmer.
 Metz, John and Barbara Bouvy, 1407 Bloomfield St.
 Anna, Mary, John, Johanna, Frederick, Catharina Bouvy.
 Metz, Sebastian and Catharine Meyer, 1124 E. Fifth St.
 Metzler, Christophe and Frances Rudolf, East Alton, Route 2.
 Peter, Lawrence.
 Metzler, † Peter and Louisa Maul, 713 E. Third St.
 Joseph.
 Meyer, Louis and Louise Metzger, Common St.
 Fred, Julia, Reinilla, Blanka, Rudolph, Hildegard.
 Meyers, Gustav, 517 E. Third St.
 Metzroth, Mrs. Josepha, 1217 East Sixth St.
 Michael, † John and Anna Bissinger, 1712 Maple St.
 Aloysius, Robert, Elizabeth, Caroline.
 Miller, † Andrew and Catharina, 1028 E. Second St.
 Caroline.
 Miller, Emerich and † Elizabeth Grossheim, 648 North St.
 Miller, † Fred and Mary Jun, 618 Ridge St.
 Jacob.
 Miller, † Henry and Theresa Schuelle, 1105 E. Third St.
 Bernard, Joseph, Frank, Theresa, John, Adolph, Louisa,
 Margaretha.
 Miller, † Joseph and Justina Hellrung, 1108 E. Sixth St.
 Charles.
 Miller, Joseph R. and Frances Eckhard, 648 North St.
 Florence.
 Miller, Louis and Georgina Manhardt, 1722 Bozza St.
 George, Louis, Emma.
 Miller, Sebastian and Rosa Grossheim, 1215 North St.
 John, Louis, Salome, Herbert, Elizabeth.
 Miller, Thomas and Mary Herren, 1029 Diamond St.
 Fred.
 Misegades, John and Julia Joehl, 608 East Fifteenth St.
 Fred, Meinrad, Julia, Joseph, Frank.
 Misegades, John and Julia Diamond, 608 East Fifteenth St.
 Mohr, (m) William and Theresa Shelle, 821 E. Sixth St.
 George.
 Mohrmann, † Joseph and Bernardine Bartholomae, 517 E. Third St.
 Joseph, Anthony.

Mook, (m) Fred and Frances Kirchoff, 719 Clement Place.
George, Ida, Esther, Caroline, Frances
Morick, Adam and Mary Gruse, 956 Union St.
Nehls, Irene, Isabella, Elsa.

N

Nieder Korn, Henry and Elizabeth Cox, Yager Park.
Florence.
Nieder Korn, Henry and Anna Altendorf, East Alton.
Joseph, Catharine, Nicholas, Mary, George.
Nieder Korn, John and Philomena Fortin, Yager Park.
Aloysius.
Nieder Korn, Michael and Magdalena Holtz, Yager Park.
Frank, Agnes, Michael.
Noethen, John and Agatha, Hildebrand Godfrey.
Anna, Philomena, Louisa.
Noll, † George and Elizabeth Mohrmann, 506 E. Fifth St.
Catharine, Elizabeth, George, Clement.
Nolte, † Andrew and Frances Biermann, 1100 Pearl St.
Dorothea, Emma, Antoinette
Nolte, Joseph and Anna Leady, 718 E. Fourth St.
Claudia, Mary, Viola.

O

Ohley, Edward and Mary Klebolt, 1012 E. Sixth St.
Joseph, Elizabeth, Catharine, Frances, Emil.
Oller, Jessy and Tillie Weinrich, 1211 E. Sixth St.
Margaretha.
O'Neill, Bernard J. and Margaretha Schaefer, 520 E. Sixth St.
Bernard Shaefer, Margaretha M., Mary.
Ostermann, Bernard and Theresa Fahrigh, 600 Ridge St.
Lawrence, Caroline, John.
Overath, Helena, North Alton.
Overath, Louis and Caroline Mueller, North Alton.
Conrad, Louis, John.
Overath, Max and † Antoinette Bierman, 1106 Garden St.
Helena, Mary, Leo, John.
Overath, Henry and Helena Hartfeld, North Alton.

P

Pape, † Conrad and Elizabeth Kaufhold, 822 E. Fifth St.
Anna.
Pieper, Frank and Elizabeth, Bartholomae Front and Market Sts.
Ferdinand, Mary.
Pieper, Frank, Jr., and Catharina, 1530 Market St.
Pierce (m) Clarence and Wilhelmina Hefner, 711 E. Third St.
Eva.

Probst, John B., 956 Union St.
Puetz, † Tillmann and Maria Thoman, North Alton.

R

Rathgeb, Adolph and Mary Graf, 1934 Common St.
Anthony, Joseph, Michael, Mary, Adolph, Margaretha, Anna, and
Augusta Klopfer.
Rathgeb, † Michael, Jr., and Christina Elsen, 807 E. Third St.
Sophia, Michael, Anthony, Adolph, Ida, Mary, Leo, Herbert.
Recher, Elizabeth, Theresa, Fosterburg.
Reck Anton, and (m) Augusta Woeckel, 327 E. Fifteenth St.
Louise, Bertha, Herman, Emilie.
Rexford, William, and Josephine Schmiz, 1115 Harrison St.
Ida, Leo, Paul.
Reilly, James and Catharine Huss, 911 E. Third St.
Ora, Philip, Eva, Caecilia, Vera, Harvey, Roma.
Reessmann, Stephen and Caroline Paur, Godfrey.
Joseph, Henry.
Relleke, Mrs. Josephine, Fosterburg.
Reyland, Nicholas and Frances Schiene, Sixth and Ridge Sts.
Theodore, Leo, Nicholas.
Reyland, Peter and Theresa Schiene, 815 Henry St.
Elizabeth, Alphons, Frieda, William.
Reyland, Peter and Josephine Merkle.
Read, † Gregory and Barbara Geary, 722 E. Third St.
Mary.
Rieger, Joseph and Frances Hentrich, 1712 Maple St.
Leo, Eleonora.
Ritter, William and Rosa Pulliam, 818 E. Second St.
Laura M.
Rohrmoser, Frank and Susanna Cillien, Hampton St.
Elsa, George, Rosa, Mary.
Rost, † Henry and Catharine Finley, 1003 Easton St.
Henry, Fred, Nellie, Joseph.
Rudolf, Miss Regina, Upper Alton.
Runtz, Nicholas and Elizabeth Struif, Godfrey.
Theresa, Frank, Joseph, Nicholas.

S

Schaller, Dr. Robert and Mary Hergott, 904 E. Fifth St.
Robert, August, Dora, Herman, Joseph, Benjamin.
Scharff, † Philipp and Emma Scharff, Upper Alton.
Emilia, Helena.
Schatz, † John and Anna Schneider, 1203 Union St.
John.
Schelle, Conrad and (m) Lizzie Schwarzbeck, 1402 Bloomfield St.
Julia.

Schelle, Henry and Alice Braddick, 1123 E. Sixth St.
 Schenk, Charles and Genofeva Joehl, 1103 E. Sixth St.
 Agnes, Charles, Hilda, Edna.
 Schenk, Frank and Ella Lorch, 1219 North St.
 Schenk, Frank and Theresa Hellrung, 611 North St.
 Henry, Christopher, Joseph, Frank, Raymond, John, Theodore,
 Lawrence, Walter.
 Shitter, Anthony and † Christina Struif, Godfrey.
 Elizabeth, Joseph, Anna, Johanna.
 Schitter, Jacob and Catharine Helwacht, Godfrey.
 Louis, Fred.
 Schmerge, Joseph and (m) Wilhelmina Bose, 1630 E. Second St.
 Theresa, Helena, Wilhelmina, Elsa, Josephine, Delma, Agnes.
 Schmidt, John and Mary Simon, 946 Union St.
 Rosa, William, Leo, Mary, Edward, Joseph, Frieda, Pauline.
 Schmidt, Otto and Mary Overath, 409 Ridge St.
 Clara, Amelia, Helena, Emma, Antoinette, Julia, William.
 Schmitt, Louis and Bertha Staupp, 705 E. Third St.
 Louis, Mary, Alois, Leo.
 Schmidt, Mrs. Rosa, 705 East Third St.
 Schmiz, Mrs. Mary, 800 E. Second St.
 Albert, Wilhelmina.
 Schnaebler, Jacob and Christina Koenig, 800 E. Second St.
 Philip, Christina, Helena, Emma, Edward.
 Schneider, Frank and Susanna Waltzer, Yager Park.
 Maggie, Susanna, Mary, Irene, Jacob, Frank.
 Schneider, Peter and Theresa Stanka, 1511 Belle St.
 Peter, M. Theresa.
 Shoemig, John and Barbara Kutzenberger, Nazareth Home.
 Schollmeier, Frank and Elizabeth Butz, 925 Langdon.
 Mary, Henry, Matilda, Bertha, Elizabeth.
 Schreiber, Conrad and Caroline Graf, 200 Walnut St.
 Louisa, Charles, Henry, Philip, Fred.
 Schroeder, Anthony, Fosterburg.
 Schroeder, John and Josephine Buesser, 1222 Union St.
 Clara and Bernard.
 Schroeder, Michael and Leona Schulze, Yager Park.
 John.
 Schulte, Anthony and Elizabeth Wittmond, 824 E. Third St.
 Edward, Clara, Joseph, Frances, Agnes.
 Schulz, † Fred and Elizabeth Brandt, 919 Pearl St.
 Schulz, Fred and Anna Manns, 919 Pearl St.
 Edmond, Elizabeth, Frida, Bertha, Friedrich.
 Schulz, Henry, William, Elizabeth, Joseph, 801 Union St.
 Schulz, John and Domenica Hellrung, 801 Union St.
 John B.
 Schulz, Fred and Julia Hellrung, Royal and North St.

Schulz, Bernard and Maria Hauck, 836 Spruce St.
Catharina, Johanna, Heinrich.

Schuelle, Henry and Caroline Lampert, 920 E. Second St.
Henry, Mary.

Schwab, Henry and (m) Julia Linsig, 753 Union St.
Joseph.

Schwan, Philipp and Belle Atlantic Schneider, 313 Apple St.
Frank, Alma.

Schwegel, Nicholas and Mary Rohr, Yager Park.
Nicholas, Albert, Aloys.

Schwegel, Peter and Caroline Franz, 808 E. Second St.
Otto, Edward, John.

Scovell, (m) Wm. and Anna Jun, 640 East Fourth St.
Sylvester, Levi.

Seibert, Charles and Bertha Goeken, 518 E. Fourth St.
Helena, Paulina, Edward, Victor.

Seibert, † Charles and Agatha Jun, 518 E. Fourth St.

Seiler, John and Anna Calvey, 535 Spring St.
Mary, Henry, Rosa.

Senz, Jacob and Catharine Koenig, 169 Sanford Ave., Upper Alton.
Catharine, William, Henry, Philip, Charles, Mary.

Serf, William and Mary Schorn, Bloomfield St.
Margaret, Mary, William.

Sieben, † Jacob and Josephine Ehrhardt, 810 E. Second St.
William, Leo, Hilda.

Siegel, † George and Dora Heik, 1124 E. Third St.

Siemen, Hermann and Elizabeth Held, Fosterburg.
Fred.

Singer, John and Louisa Gottlob, Yager Park.
Henry, Lucila M.

Smyth, Clarence and Caroline Kirchhoff, 731 E. Fifth St.
Paulina, Margareth.

Smitz, Adolph and Mary, 1117 E. Fourth St.
Louis, Albert, Minnie.

Snyder, Henry and Rosa Richardson, 819 Liberty St.
Agnes, William.

Snyder, John and Clara Burg, 1715 Liberty St.
Anna.

Snyder, Joseph and Nellie Glas, 726 North St.
Gertrude, Stella and Lilly Glas.

Snyder, Michael, Sr., and † Mary Rickhauer, 1715 Liberty St.

Snyder, Michael, Jr., and Caroline Leady, Vandalia St.
Robert, Leo, Margareth.

Snyder, William and Johanna Schmiz, 796 Franklin ave.
Mary, William, Rosa, Helena, Bertha.

Spaet, † Joseph and Christina, 632 E. Third St.
Charles.

Spaet, Henry and Wilhelmina Timmermeier, 632 E. Third St.
 Henry.
 Spangenberg, Joseph and Angela Hoffmeister, 448 E. Fourteenth.
 Frank, John, Henry, Anna.
 Spaniol, John and Regina Lampert, 409 Ridge St.
 John, Henry.
 Spurgeon, Henry and Rosa Klinke, Fosterburg.
 Adela, Mary, Bertha, Robert.
 Spurgeon, Joseph and Emma Wolf, Upper Alton.
 Henry, Anna, Charles, Susanna, Leo, Lene, Joseph.
 Stanton, Lawrence and Lizzie Henkhaus, Yager Park.
 Steck, Michael and Anna Kross, 310 Washington St.
 Leo.
 Steiner, Mrs. Helena, State St.
 Stemm, (m) Charles and Maria Beck, 128 Indiana avenue.
 John B. Sackers and Anna Bernardina, Carolina Barabara
 Sackers,
 Charles Aug. Stemm.
 Stiegler, George and Elizabeth Eichhorn 1203 Union St.
 Elizabeth, Bertha, Otilia.
 Steigler, Frank and Mary Murphy, 1607 Joesting Ave.
 Stiritz, George and Anna Albrecht, Melville.
 Helena, Pauline, Anna.
 Stoeck, Victor and Johanna Schaming, 824 East Fifth St.
 Paul, Rosalia, Louisa.
 Stolze, Anton and Anna Jun, 1114 East Sixth St.
 Stolze, Frederick and Theresa Deuker, 708 Union St.
 William, Catharine, Anna, Eleanora, Ernest.
 Stolze, Henry and Seča Howbbs, 456 East Second St.
 Stratmann, Frederick and Martha Weber, 725 East Fifth St.
 Irene, Theresa, Frances, Fredericka.
 Strotmeyer, Miss Gertrude, 525 East Fourth St.
 Strubel, William and Bertha Wyss, 603 Henry St.
 Clarence, Aloys.
 Struif, Frank and Theresa Budde, 1718 State St.
 Elizabeth, August, Mary, Anna, Bertha, Leo.
 Struif, Joseph, Henry, Theresa, Johanna, Mary, Godfrey.
 Stumpf, Mrs. Cath., 460 East Second St.
 Bertha.
 Sutter, Anthony and † Theresa Rathgeb, 1119 E. Sixth St.
 Stutz, Fred and Bertha Klinke, Fosterburg.
 William.
 Sutter, Henry and Barbara Kehrs, Fosterburg.
 Sutter, † Michael and Catharine Lehmann, Fosterburg.
 Joseph, Barbara.

T

- Taphorn, Dr. Gerhardt and Mary Schaefer, Seminary Square.
Josephina, Magdalena, Louisa.
- Taphorn, Miss Catharine, Seminary Square.
- Theissen, Peter and Catharine Schroeder, Fosterburg.
William, Otilia, Bernard.
- Theissen, Philip and (m) Anna Lengenlager, 803 Staunton.
Leo, Edna, Joseph, Olinda, Elmer.
- Thiele, Mrs. Maria Anna, 644 East Second St.
- Thiele, Frank, 644 E. Second St.
- Thomas, Joseph and Louisa Haake, 521 E. Third St.
Edward, Mary, George.
- Timper, † Henry and Louisa Degenhardt, 549 E. Ninth St.
Theodore, Thecla.
- Trentsch, Herman and Paulina Lehmann, 624 E. Fourth St.
Paulina, Herman, Regina.

U

- Uhli, Henry, 1113 E. Fourth St.
- Uhli, Emma, Frank, Joseph, Barbara, 1113 E. Fourth St.
- Uhli, Henry and Barbara Spuller, 1113 E. Fourth St.
- Ulmrich, (m) Adam and Mary Brucker, 811 E. Fourth St.
Adam, John, Mary, William.
- Ursch, Andrew and Wilhelmina Schuelle, Milton Road.
Andrew, Victor.
- Ursch, Joseph and Christina Herzog, 736 E. Fifth St.

V

- Vieth, George and Sophie Uhli, 1217 Pearl St.
Adolph, Emma, Anna.
- Volbracht, Ferdinand and Wilhelmina Buerkle, 214 Spring St.
- Vonahmen, Henry and Mary Manns, Upper Alton.
John, William, Catharine, Rosa, Joseph, Henry, Mary.
- Vonahmen, John and Mary Huebner, Fosterburg.
Lawrence, Anthony, Wilhelmina, John.
- Vogel, Maurice and Margaret Blum, Godfrey.
Josephine.
- Vogel, Miss Rosa, 822 E. Second St.

W

- Wagner, † James and Anna, 518 E. Third St.
Clemens.
- Waldron, Thomas and Elizabeth Henkhaus, cor. Third and Spring St.
Louisa.
- Walter, Frank and Catherine Klasner, State and Grafton Sts.
- Walter, Sebastian, 1025 Diamond St.

Waiter, Miss Anna, 416 East Second St.
 Wanura, † Wenzel and Theresa, 714 E. Fifth St.
 Wardein, Henry and Wilhelmina Schulz, 1025 Diamond St.
 Herman, Antoinette, Heinrich, Victor.
 Wardein, Mathias and Mary Timper, 1031 Diamond St.
 Frances, Louisa.
 Wardein, Vincent and Hendrina Peters, 931 Pearl St.
 Lawrence, Mary, Joseph, Johanna.
 Weber, Frank and Ella Keller, North Alton.
 Wilhelmina, Alvina, George, Frank.
 Wegener, Alexander and Caroline Vonnahmen, 1005 Pearl St.
 Henry, Anna, Mary, Clara, Gertrude, Sophia, John, Frank.
 Wegener, Alexander F. and Mary A. Jun, 818 Union St.
 Mary, Theresa, Barbara.
 Wegener, † Theodore and Mary Budde, 2211 Common St.
 Theodore, Theresa, Henry, Elizabeth, John, Joseph.
 Weindel, Oscar and (m) Christina Weisbach, 927 East Third St.
 Florence, Herbert, Almeda, Vincent.
 Weinrich, John and Mary Ursch, Third and Cherry Sts.
 Leo, Maria.
 Weinrich, Valentine and Cunigunde Henkel, 1211 East Sixth St.
 Frank, Bernard.
 Weinrich, Joseph and Elizabeth Klebolt, 1205 East Fifth St.
 Johanna.
 Weirich, Henry, Sr., and Mary Jockenhoefer, 1009 Pearl St.
 William.
 Weirich, John and Caroline Miller, 902 Clement Place.
 Florian.
 Welling, Frank J. and (m) Ritta Harris, Fosterberg.
 Werner, Charles and Elizabeth Kirchoff, 731 East Fifth St.
 George, William, Mary, Emil.
 Leo, Edward, George, William, Mary.
 Wetzstein, John and Magdalena Manns, 814 East Second St.
 Hubert.
 Wetstein, John and Anna Weirich, East Alton.
 Mary, Magdalena, Joseph, Elizabeth, Caecilia, Anna, Johanna.
 Wetzstein, Joseph, Sr., and Caroline Walter, 1321 Pearl St.
 Josephine, Fred, Emma, Anna.
 Wetzstein, Joseph, Jr., and Lena Gleich, East Alton.
 Wetzstein, Mathias and Anna Relleke, East Alton.
 Edward, Henry, Frieda, Matthew, Frank.
 White, Gabriel and Mary Boschert, 612 Langdon St.
 John, Lucy, Joseph, Clara, Gabriel, Frank.
 Wickart, † Anthony and Mary Fischer, 716 E. Second St.
 Joseph, Aloysius.
 Wickenhauser, † Conrad and Otilia, East Alton.
 Joseph, George, Mary.

Wickenhauser, John and Otilia Eichhorn, East Alton.
 Albert, Herbert, Joseph, Elizabeth, Emil.
 Wickenhauser, William and Theresa Eichhorn, East Alton.
 Aegidius, John, Mary, William, George, Leo, Anna, Frank,
 Catherina.
 Wieneke, Clemens and Lilly Murray, 1115 Harrison St.
 Winkler, Joseph and Emilia Haurin, 705 Bloomfield St.
 Susanna, Otilia, Edward, Frederick, Olivia M., Anton.
 Winters, Philip and Barbara Merkle, 501 Shields St.
 Wieschhaus, John and Perthia Teipel, 817 East Third St.
 John, Gertrude.
 Wolf, Adam and Magdalena Thomas, 618 East Second St.
 Henry, Julius, Adam, Philip, Emil, Edward, Anthony.
 Wolf, † Ernest and Dorothea Grossheim, 623 North St.
 Elizabeth, Agnes, Frieda, Aloys.
 Wolf, Frank and Rebecca Harris, Fosterburg.
 Wolf, Julius and (m) Eva Engelhardt, 445 East Second St.
 Virginia.
 Wolf, Nicholas and Regina Biermann, 735 East Fourth St.
 Wonlich, (m) William and Margaretha Dauschen, 13 West Elm St.
 Henry, William, John, Martin.
 Wuellner, Joseph and Frances Hellrung, 1119 Union St.
 Mary, Christ, Joseph, Henry, Andrew, Louisa, Elizabeth, Ger-
 trud, Albert, Walter.
 Wuellner, John and Ida Joehl, 916 Royal St.
 Wutzler, (m) Alvin and Elizabeth Pieper, 634 Spring St.
 Alvina.
 Wyss, Samuel and Dora Emmert, 914 Henry St.
 Pauline, Emmet Leo, Margaretha Florentine, Angela Maria,
 Bertha Helena.
 Wyss, † William and (m) Mattie Fajan, 632 E. Fourth St.
 Henry, Ada, Walter, Roy, Weber.

Y

Young, Julius and Louisa Beil, 529 Spring St.
 Paul, Carol Bertha, Catharina, Joseph.

Z

Zander, Adam and Emilia Arp, 1141 Long Ave.
 Blanka, Carolina, Clara.
 Zichler, Frank and Rosa Schoenfeld, 1110 Pearl St.
 Anna, Frank, John, Otto, Rosa.

Wickenhauser, John and Otilia Eichhorn, East Alton.
 Albert, Herbert, Joseph, Elizabeth, Emil.
 Wickenhauser, William and Theresa Eichhorn, East Alton.
 Aegidius, John, Mary, William, George, Leo, Anna, Frank,
 Catherina.
 Wieneke, Clemens and Lilly Murray, 1115 Harrison St.
 Winkler, Joseph and Emilia Haurin, 705 Bloomfield St.
 Susanna, Otilia, Edward, Frederick, Olivia M., Anton.
 Winters, Philip and Barbara Merkle, 501 Shields St.
 Wieschhaus, John and Bertha Teipel, 817 East Third St.
 John, Gertrude.
 Wolf, Adam and Magdalena Thomas, 618 East Second St.
 Henry, Julius, Adam, Philip, Emil, Edward, Anthony.
 Wolf, † Ernest and Dorothea Grossheim, 623 North St.
 Elizabeth, Agnes, Frieda, Aloys.
 Wolf, Frank and Rebecca Harris, Fosterburg.
 Wolf, Julius and (m) Eva Engelhardt, 445 East Second St.
 Virginia.
 Wolf, Nicholas and Regina Biermann, 735 East Fourth St.
 Wonlich, (m) William and Margaretha Dauschen, 13 West Elm St.
 Henry, William, John, Martin.
 Wuellner, Joseph and Frances Hellrung, 1119 Union St.
 Mary, Christ, Joseph, Henry, Andrew, Louisa, Elizabeth, Ger-
 trud, Albert, Walter.
 Wueilner, John and Ida Joehl, 916 Royal St.
 Wutzler, (m) Alvin and Elizabeth Pieper, 634 Spring St.
 Alvina.
 Wyss, Samuel and Dora Emmert, 914 Henry St.
 Pauline, Emmet Leo, Margaretha Florentine, Angela Maria,
 Bertha Helena.
 Wyss, † William and (m) Mattie Fajan, 632 E. Fourth St.
 Henry, Ada, Walter, Roy, Weber.

Y

Young, Julius and Louisa Beil, 529 Spring St.
 Paul, Carol Bertha, Catharina, Joseph.

Z

Zander, Adam and Emilia Arp, 1141 Long Ave.
 Blanka, Carolina, Clara.
 Zichler, Frank and Rosa Schoenfeld, 1110 Pearl St.
 Anna, Frank, John, Otto, Rosa.

Italian Members of St. Mary's Congregation.

505 EAST FOURTH ST.

Antonino Azzarello
Ginseppa Nuzzo
Anna Azzarello
Vincenzo Azzarello
Guiseppe Azzarello
Guiseppe Azzarello
Rosario Lercara
Guiseppe Lercara
Ros. Lecaradi Girolam
Agostino Marretta

553 EAST THIRD ST.

Vito LaPinta
Antonino Amadeo
Pietro Torre
Antonino Giacalone
Goetano Giacalone
Vito Giacalone
Vincenzo Tardino
Leonardo Tugrande
Nicola Torre
Faro Cosimano
Antonino Asaro
Giacomo Bono
Giovanni LaPinta

519 EAST THIRD ST.

Donato Marrone
Maria Bellina
Francesco Marino
Biagio Marino
Guiseppe Marino
Biagio Scoma

551 EAST THIRD ST.

Antonino Ciaccio
Benedetta Coniglio
Giacomo Coniglio
Antinino Nicosia
Giovanna Cossata

604 EAST SECOND ST.

F. Paolo Digongi
Caterina Dinoto
Nicola Digangi
Giovanni Digangi

605 EAST SECOND ST.

Giovanni Novareno
Giovanni Sante

550 EAST SECOND ST.

Luciano Gristina
Oliva Maro
Girolamo Marcatante
Pasquale Maro
Guiseppe Galletto di Nicola
Guiseppe Galletto
Damiano Campagna
Antonino Farro
Damiano Catalano
Crocifissa Militello

McCLURE PLACE.

Francesco Romano
Grazia Speciale
Pietro Romano
Francesco Romano
Antonino Romano
Guiseppe Romano
Nunzia Romano
Francesco Bottitta
Andrea Bottitta
Damiano Bottitta
Francesco Modica

EAST ALTON.

Salvatore Latragna
Carmela Nicosia
Michele Nicosia
Vincenzo Nicosia
Salvatore Tppolito
Antonino Catalano
Cvorfissa Melitello
Benedetto Todaro
Filippa Panepinto
Vincenzo Todaro
Vincenza Todaro
Damiano Todaro
Salvator Catalano
Antonino Nicosia
Matteo Nicosia
Corrio Antonio and
Benedetta Coniglio



COMMITTEE OF ARRANGEMENTS.

Vincent Wardein.
Henry Budde.

A. J. Degenhardt.
Rev. J. Meckel.

L. W. Hellrung.
F. Volbracht.

C. Goeken.
John Snyder.

Program of the Golden Jubilee Celebration of St. Mary's Church, Alton, Illinois.

Sunday, Dec. 27th—Pontifical Mass and brief Sermons in German and English.

In the evening at St. Mary's Hall: Jubilee speeches, interspersed by music and song.

Monday, Dec. 28th—Solemn Mass for Benefactors.

In the evening: Children's Entertainment.

Tuesday, Dec. 29th—Solemn Mass for the deceased members of St. Mary's Congregation.

In the evening: Entertainment by St. Aloysius Society.

Wednesday, Dec. 30th—In the evening: General Jollification.



St. Patrick's Church.

Since we have mentioned the Cathedral congregation, under the Rectorship of the Very Rev. E. L. Spalding, V.G., we wish to insert also the picture of St. Patrick's Church.

The youngest of the Catholic congregations in Alton, though it is, its grand school house, with a large number of children, bids fair a very bright future under the able administration of the Rev. F. Kehoe, and under the protection of its noble Patron Saint.



Mayor Edmond Beall.

THE CITY OF ALTON IN 1908.

The City of Alton in 1908, with a population of about 25,000 inhabitants; with its magnificent hills, dotted with fine residences; with its grand thoroughfares, almost all paved; with its various factories, teeming with industry and life; with the mighty river of the Mississippi, on whose bosom stately steamers move to and fro—what a spectacle to the eyes of the stranger! How different from what it was fifty years ago! What will it be fifty years hence?

Let us be good, law-abiding citizens; may we love sobriety and good morals! Let debauchery and divorce, dishonesty and intemperance never find a quiet home in our fair city! Let peace and generous love unite our efforts for the welfare of all that have their homes in this city of ours, in which nature and thrift have done such marvelous things.

